

Access Service

C3-A. CARRIER COMMON LINE ACCESS SERVICE

TABLE OF CONTENTS

Sheet No.

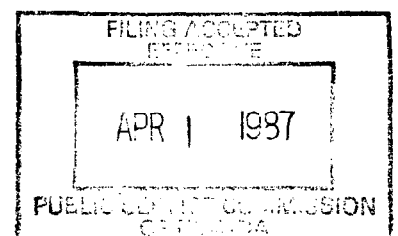
3.1 GENERAL DESCRIPTION.....	1
3.2 LIMITATIONS.....	2
A. REGULATIONS.....	2
3.3 UNDERTAKING OF THE UTILITY.....	3
A. REGULATIONS.....	3
3.4 OBLIGATIONS OF THE CUSTOMER.....	5
A. REGULATIONS.....	5
3.5 PAYMENT ARRANGEMENTS.....	7
A. REGULATIONS.....	7
3.6 PAYMENT OF COIN SENT - PAID MONIES.....	8
A. BILL PERIOD COIN REVENUE.....	8
B. TOTAL CUSTOMER COIN REVENUE.....	9
C. RECOURSE ADJUSTMENTS.....	9
D. PAYMENT OF NET CUSTOMER COIN REVENUE.....	9
E. AUDIT PROVISIONS.....	10
3.7 RATE REGULATIONS.....	10
A. REGULATIONS.....	10
3.8 RATE AND CHARGES.....	18
3.9 STATEWIDE SERVICE FUND POOL.....	18
A. GENERAL DESCRIPTION.....	18
B. RATE REGULATIONS.....	18
3.10 RATES AND CHARGES.....	19

Issued: MAR 25 1987

Effective: APR 1 1987

Advice No. 1459

Issued by
R. K. Van Allen
President



C3-A. CARRIER COMMON LINE ACCESS SERVICE

3.1 GENERAL DESCRIPTION

The Utility will provide Carrier Common Line Access Service (Carrier Common Line Access) to customers.

Carrier Common Line Access provides for the use of Utility common lines by customers for access to End Users to furnish interLATA and/or interstate Communications.

Carrier Common Line Access is provided where the customer obtains Utility Switched Access Service under this tariff.

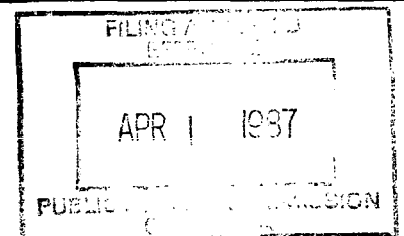
Premium Access is (1) Switched Access Service provided to customers under this tariff which furnish interLATA MTS/WATS, and Switched Access Service in an end office converted to equal access.

Non Premium Access is Switched Access Service provided in an end office not yet converted to equal access to customers that do not furnish interLATA MTS/WATS.

In addition, a Special Access Surcharge as set forth in C7.3.1 following will apply to jurisdictional interLATA and/or interstate Special Access Services provided by the Utility to a customer, in accordance with regulations as set forth in C7. following.

Issued: MAR 25 1987
Effective: APR 1 1987
Advice No. 1459

Issued by
R. K. Van Allen
President



C3-A. CARRIER COMMON LINE ACCESS SERVICE

3.2 LIMITATIONS

A. REGULATIONS

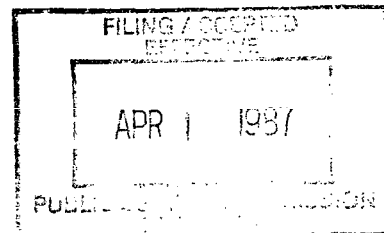
1. A telephone number is not provided with Carrier Common Line Access.
2. Detail billing is not provided for Carrier Common Line Access.
3. Directory listings are not included in the rates and charges for Carrier Common Line Access.
4. Intercept arrangements are not included in the rates and charges for Carrier Common Line Access.
5. All line side connections provided in the same access group will be limited to the same features and operating characteristics.
6. All trunk side connections provided in the same access group will be limited to the same features and operating characteristics.
7. Where Switched Access Services are connected with Special Access Services at Utility Designated WATS serving offices for the provision of WATS or WATS-type Services, Switched Access Service minutes which are carried on that end of the service (i.e., originating minutes for outward WATS and WATS-type services and terminating minutes for inward WATS and WATS-type services) shall not be assessed Carrier Common Line Access per minute charges.

Issued: MAR 25 1987

Effective: APR 1 1987

Advice No. 1459

Issued by
R. K. Van Allen
President



C3-A. CARRIER COMMON LINE ACCESS SERVICE

3.3 UNDERTAKING OF THE UTILITY

A. REGULATIONS

1. Where the customer is provided with Switched Access Service under other sections of this tariff, the Utility will provide the use of Utility common lines by a customer for access to End Users at rates and charges as set forth in C3.8 following.

2. Where the customer is reselling MTS and or MTS-type service(s) on which the Carrier Common Line and Switched Access charges have been assessed, the customer may, at the option of the customer, obtain Feature Group A, Feature Group B or Feature Group D Switched Access Service under this tariff as set forth in Section 6 following for originating and/or terminating access in the local exchange. Such access group arrangements whether single lines or trunks or multiline hunt groups or trunk groups will have Carrier Common Line Access Charges applied as set forth in C3.8 following in accordance with the regulations set forth in C3.7 following. For purposes of administering this provision:

Resold interstate inward MTS and MTS-type service(s) shall include collect calls, third number calls and credit card calls where the reseller pays the underlying carrier's service charges; and shall not include intrastate minutes of use.¹

(N)

Resold interstate outward MTS and MTS-type service(s) shall not include collect, third number, credit card or intrastate minutes of use.¹

(N)

¹ Effective July 29, 2016, collect calls and calls billed to a third number have been discontinued by the Utility Company.

(N)

(N)

C3-A. CARRIER COMMON LINE ACCESS SERVICE

3.3 UNDERTAKING OF THE UTILITY (Cont'd)

A. REGULATIONS (Cont'd)

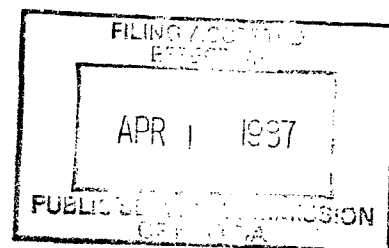
3. When access to the local exchange is required to provide a customer service (e.g., MTS/WATS-type, Telex, Data, etc.) that uses a resold Private Line Service, Switched Access Service Rates and Regulations, as set forth in C6. following will apply except when such access to the local exchange is required for the provision of an enhanced service. Carrier Common Line Access rates and charges as set forth in C3.8 following apply in accordance with the regulations as set forth in C3.7 following.
4. The Switched Access Service provided by the Utility includes the Switched Access Service provided for intrastate interLATA communications and the Carrier Common Line Access rates and charges as set forth in C3.8 following apply in accordance with the regulations as set forth in C3.7 following.
5. When the customer is provided Operator Trunk-Coin or Combined Coin and Non-Coin or Operator Trunk-Full Feature Optional Features for sent-paid pay telephone access as set forth in C6. following, the Utility will collect sent-paid monies from pay telephone stations and will remit monies to the customer as set forth in C3.6 following. The Utility will provide message call detail format and bill periods used to determine the monies upon request from the customer.

Issued: MAR 25 1987

Effective: APR 1 1987

Advice No. 1459

Issued by
R. K. Van Allen
President



C3-A. CARRIER COMMON LINE ACCESS
SERVICE 3.4 OBLIGATIONS OF THE CUSTOMER

A. REGULATIONS

1. The Switched Access Service associated with Carrier Common Line Access shall be ordered by the customer under other sections of this tariff.
2. The customer facilities at the premises of ordering customer shall provide the necessary on-hook and off-hook supervision.
3. Unless the customer reports (1) intrastate use as set forth in 4. following, or (2) Feature Group A, B, or D Switched Access Service as set forth in 6. following, all Switched Access Service provided to the customer will be subject to Carrier Common Line Access charges.
4. When the customer reports intrastate use of Switched Access Service, the associated Carrier Common Line Access used by the customer for both interLATA and intrastate will be determined as set forth in C3.7. following.

(D)

(D)

5. When the customer is reselling MTS and/or MTS-type Service as set forth in C3.3 preceding, the customer will be charged the Carrier Common Line Access charges in accordance with the regulations as set forth in C3.7 following if the customer or the provider of the MTS Service furnishes documentation of the MTS usage and/or the customer furnishes documentation of the MTS-type usage. Such documentation supplied by the customer shall be supplied each month and shall identify the involved resold MTS and/or MTS-type Services. The monthly period used to determine the minutes of use for resold MTS and/or MTS-type Service(s) shall be the most recent monthly period for which the customer has received a bill for such resold MTS and/or MTS-type Service(s).

(T)

C3-A. CARRIER COMMON LINE ACCESS SERVICE

3.4 OBLIGATIONS OF THE CUSTOMER (Cont'd)
A. REGULATIONS (Cont'd)

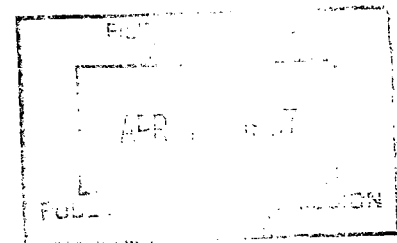
This information shall be delivered to the Utility at a location specified by the Utility no later than 15 days after the bill date shown on the resold MTS and/or MTS-type Service bill. If the required information is not received by the Utility, the previously reported information, as described preceding, will be used for the next two months. For any subsequent month, no allocation or credit will be made until the required documentation is delivered to the Utility by the customer.

7. When the customer orders Switched Access Service as set forth in 6. preceding, the Utility or the billing entity may request when resold MTS is involved, a certified copy of the customer's MTS usage billing from either the customer or the provider of the MTS Service and/or when resold MTS-type Service is involved, a certified copy of the customer's MTS-type usage billing from either the customer or the provider of the MTS-type service. The requests for this billing will relate back no more than 12 months prior to the current billing period.

8. Where Operator Trunk-Coin or Combined Coin and Non Coin or Operator Trunk-Full Feature Optional Features for sent-paid pay telephone access is provided to the customer and the customer wishes to receive the monies it is due for the monies collected by the Utility from coin pay telephone stations, the customer shall furnish to the Utility, at a location specified by the Utility, the customer message call detail for the customer sent-paid (coin) pay telephone calls in accordance with the Utility collection schedule. The customer message call detail furnished shall be in a standard format established by the Utility as set forth in C8. following. If no customer message call detail is received from the customer for each bill period established by the Utility, the Utility will assume there were no customer sent-paid (coin) pay telephone calls for the period. In addition the customer shall furnish a schedule of its charges for sent-paid (coin) calls to the Telephone at a location and date as specified by the Utility. Any change in the customer's schedule of charges shall be furnished to the Utility one day after the change becomes effective.

Issued: MAR 25 1987
Effective: APR 1 1987
Advice No. 1459

Issued by
R. K. Van Allen
President



C3-A. CARRIER COMMON LINE ACCESS SERVICE

3.5 PAYMENT ARRANGEMENTS

A. REGULATIONS

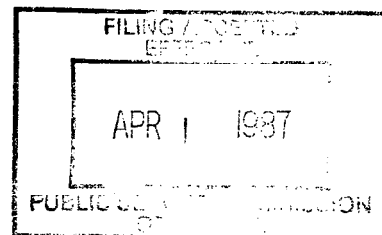
1. The Exchange Carrier Association billing entity will bill the Carrier Common Line Access. The bill day (i.e., the billing date of the bill) in a month for each customer account will be established by the Exchange Carrier Association billing entity. Payment is due from the customer 31 days after the bill day date (payment date) or by the next bill date (i.e., same date in the following month as the bill date), whichever is the shortest interval, and is payable in immediately available funds. If such payment date is a Saturday, Sunday or Holiday (i.e., New Year's Day, Independence Day, Labor Day, Thanksgiving Day, Christmas Day, the second Tuesday in November, and a day when Washington's Birthday, Memorial Day or Columbus Day is legally observed), payment will be due from the customer as follows:

If such payment date falls on a Sunday or on a Holiday which is observed on a Monday, the payment date shall be the first non-Holiday day following such Sunday or Holiday. If such payment date falls on a Saturday or on a Holiday which is observed on Tuesday, Wednesday, Thursday or Friday, the payment date shall be the last non-Holiday day preceding such Saturday or Holiday.

2. Further, if any portion of the Carrier Common Line Access payment is received by the Exchange Carrier Association billing entity after the payment date as set forth in 1. preceding, or if any portion of the Carrier Common Line Access payment is received by the Exchange Carrier Association in funds which are not immediately available to the Exchange Carrier Association billing entity, then a late payment penalty shall be due to the Exchange Carrier Association billing entity. The late payment penalty shall be the portion of the Carrier Common Line Access payment not received by the payment date times a late factor. The late factor shall be the lesser of:
 - a. The highest interest rate (in decimal value) which may be levied by law for commercial transactions, compounded daily for the number of days from the payment date to and including the date that the customer actually makes the payment to the Exchange Carrier Association, or
 - b. 0.000590 per day, compounded daily for the number of days from the payment date to and including the date that the customer actually makes the payment to the Exchange Carrier Association.

Issued: MAR 25 1987
Effective: APR 1 1987
Advice No. 1459

Issued by
R. K. Van Allen
President



C3-A. CARRIER COMMON LINE ACCESS SERVICE

3.5 PAYMENT ARRANGEMENTS (Cont'd)
A. REGULATIONS (Cont'd)

3. In the event a billing dispute concerning a month's Carrier Common Line Access billed to the customer by the Exchange Carrier Association billing entity is resolved in favor of the Exchange Carrier Association billing entity, any payments withheld pending settlement of the dispute shall be subject to the late payment penalty set forth in 2. preceding. If the customer disputes the bill on or before the payment date, and pays the undisputed amount on or before the payment date, any late payment charge for the disputed amount will not start until 10 days after the payment date. If the billing dispute is resolved in favor of the customer, no late payment penalty will apply to the disputed amount. In addition, if the customer disputes the billed amount and pays the total amount (i.e. the non-disputed amount and the disputed amount) on or before the payment date and the billing dispute is resolved in the favor of the customer, the customer will receive a credit for a disputed amount penalty from the billing entity if the billing dispute is not resolved within 10 working days following the payment date or the date the customer furnishes to the billing entity documentation to support its claim plus 10 working days, whichever date is the later date. The disputed amount penalty shall be the disputed amount resolved in the customer's favor times a penalty factor.

3.6 PAYMENT OF COIN SENT-PAID MONIES

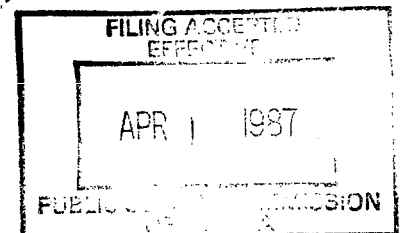
The Utility will collect the monies from coin pay telephone stations and will determine and remit amounts due to a customer which is provided Operator Trunk-Coin or Combined Coin and Non-Coin or Operator Trunk-Full Feature Optional Features for sent-paid pay telephone access as set forth in C6. as follows:

A. BILL PERIOD COIN REVENUE

The Utility will establish a collection schedule for each coin pay telephone station and will collect the monies from the coin pay stations based on this collection schedule. The monies collected based on this schedule during each bill period established by the Utility will be identified by coin pay telephone station and summed to develop the Bill Period Coin Revenue for each coin record day (i.e., the day a record is prepared and dated to show the amount due the customer).

Issued: MAR 25 1987
Effective: APR 1 1987
Advice No. 1459

Issued by
R. K. Van Allen
President



C3-A. CARRIER COMMON LINE ACCESS SERVICE

3.6 PAYMENT OF COIN SENT-PAID MONIES (Cont'd)

B. TOTAL CUSTOMER COIN REVENUE

The interLATA Total customer Coin Revenue will be determined by the Utility based on the customer message call detail received from the customer for each bill period and the customer's schedule of charges for sent-paid coin calls. Such Total customer Coin Revenue will be developed each coin record day.

C. RECOURSE ADJUSTMENTS

For each coin record day, the Utility will subtract from the Total customer Coin Revenue an amount for coin station shortages. Coin station shortages are amounts resulting from unauthorized calling at coin pay telephone stations, use of unauthorized coins (i.e., foreign coins, slugs and improper use of U.S. pennies), unauthorized removal of coins from coin pay telephone stations and coin refunds beyond the Utility's control. Such amount for coin station shortages will be developed by the Utility by multiplying the Total Customer Coin Revenue for each coin record day by a shortage factor. Such amount will be rounded to the nearest penny. The shortage factor will be determined for each customer by dividing the quarterly total coin shortage amount by the quarterly total coin revenue amount (i.e., total coin revenue equals the coin revenue due under exchange tariffs, state toll pricing, and interstate toll tariffs). The total coin shortage amount and the total revenue amount will be determined by the Utility through a quarterly special study. (C)

D. PAYMENT OF NET CUSTOMER COIN REVENUE

The Utility will determine the Net customer Coin Revenue for each coin record day by subtracting from the Total customer Coin Revenue determined as set forth in B. preceding the amount for coin station shortages determined as set forth in C. preceding. On the date (payment date) determined by adding 45 days to the coin record day, the Utility will remit payment to the customer for the Net customer Coin Revenue.

Issued: March 3, 2004
Effective:
Advice No.: 1935

Issued by
Sylvia Samano
President - Nevada

MAY 26 2004

PUBLIC UTILITIES COMMISSION
OF NEVADA

C3-A. CARRIER COMMON LINE ACCESS SERVICE

3.6 PAYMENT OF COIN SENT-PAID MONIES (Cont'd)

E. AUDIT PROVISIONS

Upon reasonable written notice by the customer to the Utility, the customer shall have the right through its authorized representative to examine and audit, during normal business hours and at reasonable intervals as determined by the Utility, all such records and accounts as may under recognized accounting practices contain information bearing upon the determination of the amount payable to the customer. Adjustment shall be made by the proper party to compensate for any errors or omissions disclosed by such examination or audit. Neither such right to examine and audit nor the right to receive such adjustment shall be affected by any statement to the contrary, appearing on checks or otherwise, unless such statement expressly waiving such right appears in a letter signed by the authorized representative of the party having such right and delivered to the other party.

Upon reasonable written notice by the Utility to the customer, the Utility shall have the right through its authorized representative to examine and audit, during normal business hours and at reasonable intervals as determined by the customer and the Utility, such records and accounts as may, under recognized accounting practices, contain information bearing upon the determination of the amount payable to the customer.

(N)
|
(N)

All information received or reviewed by the customer or its authorized representative is to be considered confidential and is not to be distributed, provided or disclosed in any form to anyone not involved in the audit, nor is such information to be used for any other purpose.

3.7 RATE REGULATIONS

A. REGULATIONS

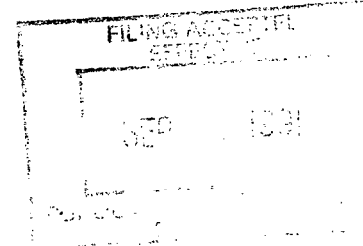
1. The Transitional Charges will be billed to each Switched Access Service provided under this tariff in accordance with the regulations as set forth in F. following except as set forth in 4., and 5. following.

Issued: **MAY 01 1991**

Effective:

Advice No. **1587**

Issued by
R. C. Blanz
President



C3-A. CARRIER COMMON LINE ACCESS SERVICE

3.7 RATE REGULATIONS (Cont'd)

A. REGULATIONS (Cont'd)

2. When access minutes are used to determine the Transitional Charges, they will be accumulated using call detail recorded by Utility equipment except as set forth in 3. following and Feature Group C operator and TSPS call detail such as pay telephone sent-paid, operator-DDD, operator-person, collect, credit-card, third number and/or other like calls recorded by the customer. The Utility measuring and recording equipment except as set forth in 3. following will be associated with end office or local tandem switching equipment and will record each originating and terminating access minute where answer supervision is received. The accumulated access minutes will be summed on a line by line basis, by line group or by end office, whichever type of account is used by the Utility, for each customer and then rounded to the nearest minute.
3. When Carrier Common Line Access is provided in association with Feature Groups A or Feature Group B Switched Access Service in Utility offices that are not equipped for measurement capabilities, an assumed average interLATA access minutes will be used to determine the Transitional Charges. These assumed access minutes are as set forth in Section C6.7.8 of the exchange carriers access tariff.
4. When the customer is provided an access group to be used in conjunction with the resale of MTS and/or MTS-type Services as set forth in C3.preceding, subject to the limitations of Carrier Common Line as set forth in C3. preceding, and the billing entity receives the usage information required to calculate the proration of Carrier Common Line as set forth in C3. preceding, the customer will be billed as set forth in a., b. or c. following.

When the customer is provided with more than one access group in a LATA in association with the resale of MTS and/or MTS-type Services, the resold minutes of use will be apportioned as follows:

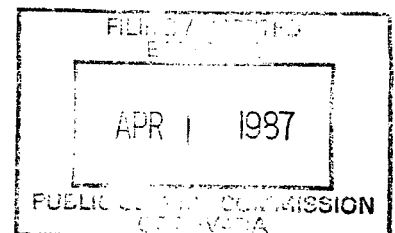
The billing entity will apportion the resold outward MTS and/or MTS-type Services and originating minutes of use for which resale credit applies, among the access groups. Such apportionment will be based on the relationship of the originating usage for each access group to the total originating usage for all access groups in the LATA. For purposes of administering this provision:

Issued: MAR 25 1987

Effective: APR 1 1987

Advice No. 1459

Issued by
R. K. Van Allen
President



C3-A. CARRIER COMMON LINE ACCESS SERVICE

3.7 RATE REGULATIONS (Cont'd)

A. REGULATIONS (Cont'd)

Resold outward MTS and/or MTS-type Services minutes shall be only those attributable to interstate outward MTS and/or MTS-type minutes and shall not include collect, third number, credit card or intrastate minutes of use.¹

(N)

The resale credit shall apply for resold outward MTS and MTS-type Services and minutes of use, provided Carrier common Line and Switched Access Charges have been assessed on such services.

The billing entity will apportion the resold inward MTS and/or MTS-type Services and terminating minutes of use for which resale credit applies, among the access groups. Such apportionment will be based on the relationship of the terminating usage for each access group to the total terminating usage for all access groups in the LATA. For purposes of administering this provision:

Resold inward MTS and/or MTS-type Services minutes shall be only those attributable to interstate inward MTS/MTS-type (i.e., collect calls, third number calls, and credit card calls) and shall not include intrastate minutes of use or MTS/MTS-type minutes of use paid for by another party.¹

(N)

The resale credit shall apply for resold inward MTS and MTS-type Services and minutes of use, provided Carrier Common Line and Switched Access Charges have been assessed on such services.

¹ Effective July 29, 2016, collect calls and calls billed to a third number have been discontinued by the Utility Company.

(N)

(N)

C3-A. CARRIER COMMON LINE ACCESS SERVICE

3.7 RATE REGULATIONS (Cont'd)
A. REGULATIONS (Cont'd)

In order for the rate regulations to apply as set forth in a, b, or c following, the access groups and the resold MTS and/or MTS-type Services must be provided in the same state in the same exchange, provided by the same Utility and connected directly or indirectly. For these exchanges that encompass more than one state, the customer shall report the information by state within the exchange.

Each of the access group arrangements used by the customer in association with the resold MTS and/or MTS-type services must be connected either directly or indirectly to the customer designated premises at which the resold MTS and/or MTS-type Services are terminated. Direct connections are those arrangements where the access groups and resold MTS and/or MTS-type Services are terminated at the same customer designated premises.

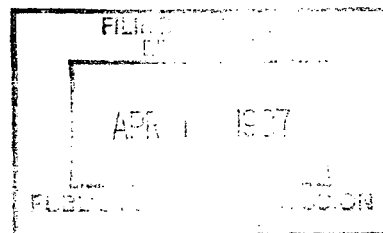
Indirect outward connections are those arrangements where the access groups and the resold outward MTS and/or MTS-type Services are terminated at different customer designated premises in the same exchange. Such different customer designated premises are connected by facilities that permit a call to flow from access groups to resold MTS and/or MTS-type Services.

Indirect inward connections are those arrangements where the access groups and resold inward MTS and/or MTS-type Services are terminated at different customer designated premises in the same exchange. Such different customer designated premises are connected by facilities that permit a call to flow from resold inward MTS and/or MTS-type Services to access groups.

The adjustments as set forth following will be computed separately for each access group.

Issued: MAR 25 1987
Effective: APR 1 1987
Advice No. 1459

Issued by
R. K. Van Allen
President



C3-A. CARRIER COMMON LINE ACCESS SERVICE

3.7 RATE REGULATIONS (Cont'd)

A. REGULATIONS (Cont'd)

a. Access Groups - Non Equal Access Offices Only

When all the usage on an access group originates from and/or terminates at end offices that have not been converted to equal access the Non Premium Access Charge per minute as set forth in C3.8 following will apply. The minutes billed Carrier Common Line Access Service charges will be the adjusted terminating interstate access minutes plus the adjusted originating interstate access minutes for such access groups.

The adjusted terminating access minutes will be the terminating interstate access minutes less the reported resold inward MTS and/or MTS-type Service minutes of use as set forth in C3.7 preceding; but not less than zero. The adjusted originating access minutes will be the originating interstate access minutes less the reported resold outward MTS and/or MTS-type Service minutes of use as set forth in C3.7 preceding; but not less than zero.

b. Access Groups - Equal Access Offices Only

When all the usage on an access group originates from and/or terminates at end offices that have been converted to equal access the Premium Access Charge per minute as set forth in C3.8 following will apply. The minutes billed Carrier Common Line Access Service charges will be the adjusted terminating interstate access minutes and the adjusted originating interstate access minutes for such access groups.

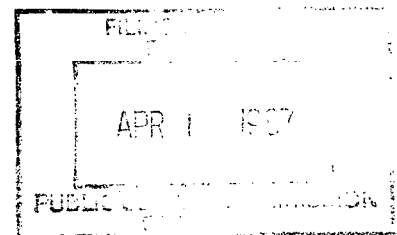
The adjusted terminating access minutes will be the terminating interstate access minutes less the reported resold inward MTS and/or MTS-type Service minutes of use as set forth in C3.7 preceding; but not less than zero. The adjusted originating access minutes will be the originating interstate access minutes less the reported resold outward MTS and/or MTS-type Service minutes of use; but not less than zero.

Issued: MAR 25 1987

Effective: APR 1 1987

Advice No. 1459

Issued by
R. K. Van Allen
President



C3-A. CARRIER COMMON LINE ACCESS SERVICE

3.7 RATE REGULATIONS (Cont'd)
A. REGULATIONS (Cont'd)

c. Access Groups - Non-Equal Access and Equal Access Offices

When an access group has usage that originates from and/or terminates at both end offices that have been converted to equal access and end offices that have not been converted, both transitional premium and non premium per minute charges as set forth in C3.8 following will apply respectively. The minutes billed Carrier Common Line Access Service charges will be the adjusted terminating interstate access minutes plus the adjusted originating interstate access minutes for such access groups.

The adjusted terminating access minutes will be the terminating interstate access minutes less the reported resold inward MTS and/or MTS-type Service minutes of use as set forth in C3.7 preceding; but not less than zero. The adjusted originating access minutes will be the originating interstate access minutes less the reported resold outward MTS and/or MTS-type Service minutes of use as set forth in C3.7 preceding; but not less than zero.

The adjusted originating access minutes and the adjusted terminating access minutes will be apportioned between premium and non premium access minutes using end-office specific usage data when available, or when usage data are not available, the premium and non premium ratios developed as set forth in C6.7 following. The Premium and Non Premium per minute charges set forth in C3.8 following will apply as appropriate to the premium and non premium access minutes determined in this manner.

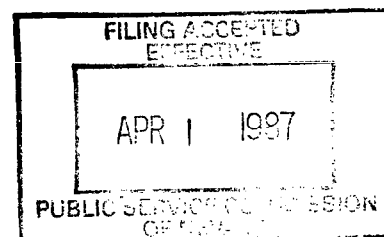
- d. The adjustment as set forth in a., b., and c. preceding will be made to the involved customer account no later than either the next bill date, or the one subsequent to that, depending on when the usage report is obtained.
- e. When the MTS and/or MTS-type usage is shown in hours, the number of hours shall be multiplied by 60 to develop the associated MTS and/or MTS-type minutes of use. If the MTS and/or MTS-type usage is shown in a unit that does not show hours or minutes, the customer shall provide a factor to convert the shown units to minutes.

Issued: MAR 25 1987

Effective: APR 1 1987

Advice No. 1459

Issued by
R. K. Van Allen
President



C3-A. CARRIER COMMON LINE ACCESS SERVICE

3.7 RATE REGULATIONS (Cont'd)

A. REGULATIONS (Cont'd)

f. The adjustment as set forth in a., b. and c. preceding will be made to the involved customer account after making the adjustments to the customer account as set forth in 5. following.

5. When the customer reports interstate and intrastate use of in-service Switched Access Service, the Carrier Common Line Access Transitional Charges will be billed only to interstate Switched Access Service access minutes based on the data reported by the customer as set forth in C2.3 preceding. The interstate Switched Access Service access minutes will, after adjustment as set forth in 4. preceding, when necessary, be used to determine the Carrier Common Line charges as set forth in 6. following.

6. After the adjustments as set forth in 4. and 5. preceding have been applied, when necessary, to the Switched Access Service access minutes, the charges for the involved customer account will be determined as follows:

a. The access minutes for all non premium rated Switched Access Service subject to Carrier Common Line Charges will be multiplied by the Transitional Charge - Premium Access per minute rate as set forth in C3.8 following to determine the charges.

c. The access minutes for all non premium rated Switched Access Service subject to Carrier Common Line Charges will be multiplied by the Transitional Charge - Non Premium Access per minute rate as set forth in C3.8 following to determine the charges.

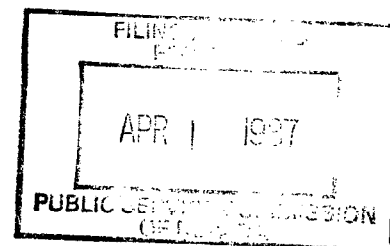
d. Carrier Common Line charges shall not be reduced as set forth in C3.3 preceding unless Switched Access Charges, as set forth in Section C6. following, are applied to the customer's Switched Access Services.

Issued: MAR 25 1987

Effective: APR 1 1987

Advice No. 1459

Issued by
R. K. Van Allen
President



C3-A. CARRIER COMMON LINE ACCESS SERVICE

3.7 RATE REGULATIONS (Cont'd)

A. REGULATIONS (Cont'd)

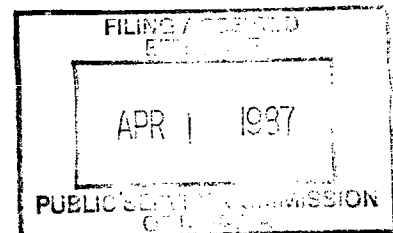
- e. The terminating Premium Access and/or Non-Premium Access, per minute charge(s) apply to all terminating access minutes of use, plus all originating access minutes of use associated with calls placed to 800 numbers, plus all originating access minutes of use associated with FGA Access Services where the off-hook supervisory signalling is forwarded by the customer's equipment when the called party answers.
- f. The originating Premium Access and/or Non-Premium Access, per minute charge(s) apply to all originating access minutes of use, less those originating access minutes of use associated with calls placed to 800 numbers and less those originating access minutes of use associated with FGA Access Services where the off-hook supervisory signalling is forwarded by the customer's equipment when the called party answers.

Issued: MAR 25 1987

Effective: APR 1 1987

Advice No. 1459

Issued by
R. K. Van Allen
President



C3-A. CARRIER COMMON LINE ACCESS SERVICE

3.8 RATE AND CHARGES

The rate for Carrier Common Line Access is:

<u>Transitional Charge</u>	<u>Rate</u>	
Premium Access, per minute		
-Terminating	0.0000	
-Originating		(C)
8YY	0.0000	
Non-8YY	0.0000	(C)
Non-Premium Access, per minute		
-Terminating	0.0000	
-Originating		(C)
8YY	0.0000	
Non-8YY	0.0000	(C)

Nevada Bell
645 East Plumb Lane, Reno, Nevada
Tariff P.S.C.N. No. 3C-A

1st Revised Page No. 19

Canceling Original Page No. 19

C3-A. CARRIERS COMMON LINE ACCESS SERVICE

(D)

(D)

Issued: December 23, 1997
Effective:
Advice No.: 1798

Issued By
D. C. Nichols
President

