

ACCESS SERVICE
TABLE OF CONTENTS

	<u>Page No.</u>	
6. Switched Access Services (Cont'd)		
6.9 Rates and Charges	207	
6.9.1 Switched Transport	207	
6.9.2 End Office	214	
6.9.3 Nonrecurring Charges	225	
6.9.4 Data Base Services	228	
6.9.5 TRS Provider Transport (TRS-PT)	230	
6.9.6 Switched Transport Service	230.2	
6.9.7 Message Unit Credit	231	
6.9.8 Information Surcharge	231	
7. Special Access Service	232	
7.1 General	232	
7.1.1 Channel Types	232	
7.1.2 Rate Categories	234.1	(T)
7.1.3 Service Configurations	236	
7.1.4 Alternate Use	240	
7.1.5 Special Facilities Routing	240	
7.1.6 Design Layout Report	240	
7.1.7 Acceptance Testing	241	
7.1.8 Ordering Options and Conditions	241	
7.1.9 Trouble Reporting	241	
7.1.10 Jurisdictional Change Certification Requirement	241.1	(N)
7.2 Service Descriptions	242	
7.2.1 Metallic Service	244.1	
7.2.2 Telegraph Grade Service	246	
7.2.3 Direct Analog Service	247	
7.2.4 Program Audio Service	257	
7.2.5 Video Service	259	
7.2.6 Reserved for Future Use	261	
7.2.7 Reserved for Future Use	264	
7.2.8 Reserved for Future Use	265	
7.2.9 Base Rate Services, DS1 Service and DS3 Service	268	
7.2.10 Optical Carrier Network Point-to-Point Service	273	
7.2.11 OC-3, OC-12, OC-48 and OC-192 Dedicated Ring Service	273.6	(T)
7.2.12 SONET Xpress Service	274.8	
7.2.13 Gigabit Ethernet Metropolitan Area Network (GigaMAN)	274.12	

TABLE OF CONTENTS

	<u>Page No.</u>	
7. Special Access Service (Cont'd)		
7.3 Network Channel Interface and Network Channel Codes	279	(T)

ACCESS SERVICE

TABLE OF CONTENTS

	<u>Page No.</u>	
7. Special Access Service (Cont'd)		
7.4 Rate Regulations	297	
7.4.1 Rate Zones	297	
7.4.2 Types of Rates and Charges	297	
7.4.3 Surcharge for Special Access Service	301	
7.4.4 Message Station Equipment Recovery Charge	303.1	(T)
7.4.5 Minimum Periods	304	
7.4.6 Moves	304.1	
7.4.7 Mileage Measurement	305	
7.4.8 Facility Hubs	306	
7.4.9 Shared Use Analog and Base Rate, DS1, DS3, OC-3, OC-12 and OC-48 Services	308	
7.4.10 Optional Payment Plan (OPP) for Base Rate, DS1, DS3, OC-3, OC-12, OC-48 Services, TV Analog Video Services, SONET Express Services and Serial Component	309	(T) (T)
7.4.11 Fiber Hubs for Direct Analog, Base Rate, DS1 or DS3 Services	309.3	
7.4.12 Shared Network Arrangement	309.4	
7.4.13 Discount Commitment Program (DCP)	309.5	
7.4.14 Network Reconfiguration Service (NRS)	309.8	
7.4.15 Installation Interval Guarantee	309.12	
7.4.16 The Optimization Plan (TOP)	309.14	
7.4.17 Multiplexer Cross-Connection	309.17	
7.4.18 Nonrecurring Charge (NRC) Waiver	309.17.1	(T)
7.4.19 Shared Facility Credit/Shared Facility Channel Service	309.18	(T)
7.5 Rates and Charges	310	
7.5.1 Metallic Service	310	
7.5.2 Telegraph Grade Service	315	
7.5.3 Direct Analog Service	320	
7.5.4 Program Audio Service	355	
7.5.5 Video Service	365	
7.5.6 Reserved for Future Use	370	
7.5.7 Reserved for Future Use	385	
7.5.8 Reserved for Future Use	395	
7.5.9 Base Rate, DS1 and DS3 Services	410	
7.5.10 Optical Carrier Network Point-to-Point Service	417	
7.5.11 OC-3, OC-12, OC-48, and OC-192 Dedicated Ring	418.1.2	
7.5.12 SONET Xpress	418.1.4	
7.5.13 Gigabit Ethernet Metropolitan Area Network (GigaMAN)	418.2	(T)
7.5.14 Message Station Equipment Recovery Charge and Special Access Surcharge	445	(T)
7.5.15 Installation and Rearrangement Charges	445.1	
7.6 Individual Case Filings	449.30	(T)
7.7 AT&T SWITCHED ETHERNET SERVICESSM	450	
7.8 AT&T DEDICATED ETHERNET SERVICE	450.35	

ACCESS SERVICE
TABLE OF CONTENTS

	<u>Page No.</u>	
25. True IP To PSTN (TIPToP) Service	992	
26. 10 Gigabit Ethernet Metropolitan Area Network (DecaMAN®)	993	
(A) Basic Channel Description	993	
(B) Rate Regulations	994	
(C) Nonrecurring Charges	999	
(D) Recurring Charges	999	
(E) Monthly Extension Rates	999	
(F) Term Pricing Plan (TPP)	999	
(G) Moves	1001	
(H) Mileage Measurement	1003	
(I) Modification of Access Service	1004	
(J) Optional Features	1005	
(K) Allowance for Service Interruptions	1012	
(L) Upgrade to DecaMAN from Lower Speeds	1013	
(M) LAN-PHY to WAN-PHY and WAN-PHY to LAN-PHY conversions	1014	
(N) Migration to AT&T Dedicated Ethernet	1014	(N)
(O) Rates and Charges	1015	(T)
27. Wavelength Metropolitan Area Network (WaveMAN SM)	1021	
27.1 Service Description	1021	
27.2 Rates and Charges	1042	
28. AT&T Volume Discount Plan (AVDP)	1047	
29. Incidental InterLATA Services	1050	
29.1 Miscellaneous Services	1050	
29.1.1 Signaling System 7 (SS7) Gateway Signaling	1050	

ACCESS SERVICE

7. Special Access Service (Cont'd)

7.2 Service Descriptions (Cont'd)

7.2.13 Gigabit Ethernet Metropolitan Area Network (GigaMAN®)^{/1/}

(C)

A. Basic Channel Description

GigaMAN® is a fiber based, point-to-point, gigabit Ethernet service that allows customers to transport data signals between local area networks (LANs). GigaMAN® transports data signals at the rate of 1 gigabit per second (Gbps). All basic service configurations provide a single direction of transmission.

The following regulations will apply to GigaMAN®:

1. This service is available to customers in those LATAs served by and within the service territory of Illinois Bell Telephone Company only.
2. If existing facilities do not exist Special Construction may apply.
3. Illinois Bell Telephone Company considers a service interrupted when it becomes unusable to the customer because of a failure of a facility component used to furnish service under this tariff or in the event that the protective controls applied by Illinois Bell Telephone Company result in the complete loss of service by the customer. An interruption period starts when a customer reports an inoperative service to Illinois Bell Telephone Company and Illinois Bell Telephone Company confirms that continuity has been lost, and ends when the service is operative.
4. Service Provisioning
 - a. The customer provided equipment (CPE) must deliver the data signals for GigaMAN® transport for the subscribed data service.
 - b. GigaMAN® provides physical layer transport only. Illinois Bell Telephone Company assumes no responsibility for the through transmission of signals generated by the CPE, for the signals by the CPE, or address signaling to the extent the CPE performs addressing. Error detection and correction of data generated by the CPE are the customer's responsibility.

/1/ Effective October 29, 2017, GigaMAN Service will no longer be available for new circuits. The Company will no longer accept orders for adds, moves, changes or new term plans for GigaMAN Service, and existing term plans may not be renewed, converted or extended. Following the expiration of a customer's existing GigaMAN term agreement, service will be provided on a month-to-month basis at the applicable monthly extension rates until the service is discontinued.

(N)
|
(N)

ACCESS SERVICE

7. Special Access Service (Cont'd)

7.2 Service Descriptions (Cont'd)

7.2.13 Gigabit Ethernet Metropolitan Area Network (GigaMAN®)^{/1/} (Cont'd)

(C)

B. Channel Configuration

There are 7 basic rate elements, which apply to GigaMAN® service:

1. Local Distribution Channel (LDC)

Local Distribution Channel is the termination of GigaMAN® at a customer-designated premise (node), as described in Section 7.1.2(A) consisting of the following two elements:

- a. the termination of the fiber optic facilities at each node in the customer's network
- b. the fiber optic facility between each node and its serving wire center

2. Channel Mileage Termination (CMT)

Channel Mileage Termination is the termination of digital transmission facilities (channel mileage) at serving or intermediate wire center(s) associated with two designated premises (nodes), as described in Section 7.1.2(B).

3. Channel Mileage (CM)

Channel mileage includes the interoffice fiber optic facilities that interconnect customer designated premises (node) serving wire centers and/or intermediate wire centers where Channel Mileage Termination charges apply, as described in Section 7.1.2(C). One channel mileage charge applies per-mile of interoffice transport segments between node serving wire centers, as described in Section 7.4.7.

4. Repeater

Repeaters (Circuit Regenerators) provide essential detection and retransmission of GigaMAN® signals. Repeaters are provided as required by the Telephone Company when actual fiber facility loss between customer designated premises and/or central office locations exceed design limits. Repeaters will be located exclusively in Telephone Company central offices and are required for each successive transport segment of approximately 21.4 db.

When protection options are ordered, as set forth in Section 7.2.13(K), additional repeaters may be necessary on the protected path as determined by the Telephone Company. The Repeater rate element will be applied to a protected circuit per fiber pair.

/1/ Effective October 29, 2017, GigaMAN Service will no longer be available for new circuits. See footnote on Page 274.12.

(N)
(N)

ACCESS SERVICE

7. Special Access Service (Cont'd)

7.2 Service Descriptions (Cont'd)

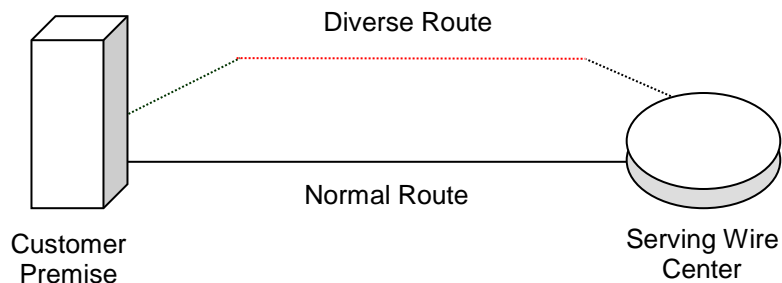
7.2.13 Gigabit Ethernet Metropolitan Area Network (GigaMAN®)^{/1/} (Cont'd)

(C)

B. Channel Configuration (Cont'd)

5. Local Channel Diversity

Local Channel Diversity provides for a transmission path between a designated customer premises and the standard service wire center (SWC) that is diverse from the normal/standard transmission path. With this arrangement, one or more local distribution channels will be provisioned over the standard route and one or more local distribution channels will be provisioned over the diverse route. Local channel diversity does not provide for all diversity, it only allows for diversity from the splice point closest to the customer's property line to the SWC. If a customer desires full diversity, arrangements must be made for constructing dual entrance facilities into the customer's premises, at the customer's expense.



6. Inter-Wire Center (IWC) Diversity

Inter-Wire Center (IWC) Diversity arrangements presume that each end of a GigaMAN® local distribution channel is serviced out of a different serving wire center (SWC). This arrangement provides a transmission path for GigaMAN® local distribution channels between the customer's designated SWC and the SWC at the distant end of the circuit over a transmission path that is separate from the standard transmission path between the two wire centers. IWC diversity does not provide for full diversity. It only offers interoffice diversity. If a customer desires full diversity, Alternate Wire Center Diversity must be implemented along with IWC Diversity. Additionally, arrangements must be made for constructing dual entrance facilities at the customer's premises, at the customer's expense.

/1/ Effective October 29, 2017, GigaMAN Service will no longer be available for new circuits. See footnote on Page 274.12.

(N)
(N)

ACCESS SERVICE

7. Special Access Service (Cont'd)

7.2 Service Descriptions (Cont'd)

7.2.13 Gigabit Ethernet Metropolitan Area Network (GigaMAN®)^{/1/} (Cont'd)

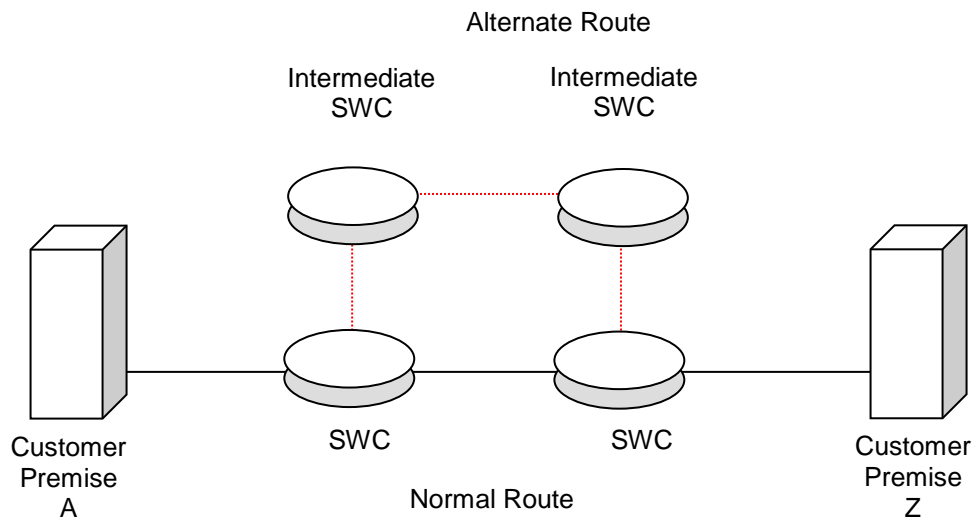
(C)

B. Channel Configuration (Cont'd)

6. Inter-Wire Center (IWC) Diversity (Cont'd)

a. Inter-Wire Center (IWC) Diversity Mileage Measurement

Mileage measurements for Access Services provisioned via an Inter-Wire Center Diversity, will be based on the special routing; i.e. mileage measurements will be calculated between the Intermediate Serving Wire Centers along the circuit path of the Diversely routed GigaMAN® service.



/1/ Effective October 29, 2017, GigaMAN Service will no longer be available for new circuits. See footnote on Page 274.12.

(N)
(N)

ACCESS SERVICE

7. Special Access Service (Cont'd)

7.2 Service Descriptions (Cont'd)

7.2.13 Gigabit Ethernet Metropolitan Area Network (GigaMAN®)^{/1/} (Cont'd)

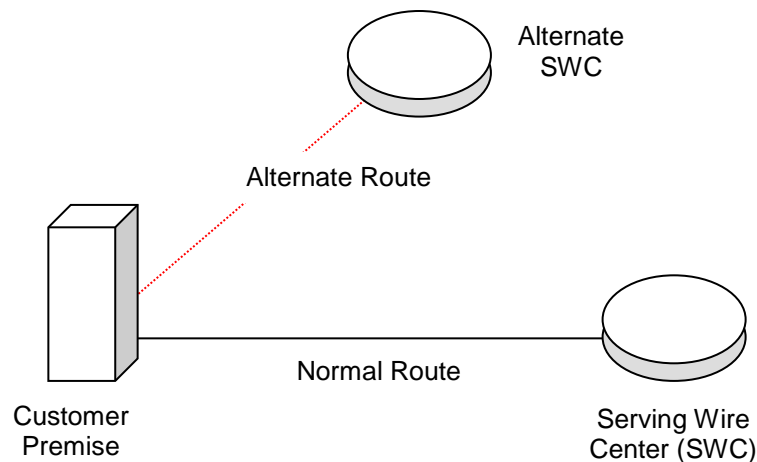
(C)

B. Channel Configuration (Cont'd)

7. Alternate Wire Center Diversity

Alternate Wire Center Diversity is for the local loop only. It provides a local channel transmission path for GigaMAN® service between the customer's designated premises and a wire center that is not the normal (or standard) service wire center. The Telephone Company will choose the alternate wire center closest to the customer's designated premises that is capable of providing GigaMAN® service over the alternate route. If a customer desires full diversity, arrangements must be made for constructing dual entrance facilities into the customer's premises, at the customer's expense.

If the circuit routed to the alternate wire center has Interoffice Mileage, measurements will be based on the special routing; i.e., mileage measurements will be made to the alternate wire center rather than the serving wire center from which the customer designated premises would normally obtain dial tone.



/1/ Effective October 29, 2017, GigaMAN Service will no longer be available for new circuits. See footnote on Page 274.12.

(N)
(N)

ACCESS SERVICE

7. Special Access Service (Cont'd)

7.2 Service Descriptions (Cont'd)

7.2.13 Gigabit Ethernet Metropolitan Area Network (GigaMAN)^{/1/} (Cont'd)

(C)

C. Nonrecurring Charges

Nonrecurring charges are one-time charges that apply for specific work activity related to the provisioning of GigaMAN[®] Service, as described in Section 7.4.2.

D. Recurring Charges

Recurring Charges are rates that apply each month or fraction thereof that the service is provided. Recurring rates apply to 12-, 36-, or 60-month period under the terms and conditions of Term Pricing Plan (TPP), discussed in Section 7.2.1 (F).

E. Monthly Extension Rates

Upon completion of a TPP, a customer's service will automatically convert to the Monthly Extension Rates unless the customer requests a new TPP.

F. Term Pricing Plan (TPP)

GigaMAN[®] is available for 12-, 36-, or 60- month periods. Monthly recurring charges apply for Local Distribution (TMECS), Channel Mileage Termination (CM6), and Channel Mileage (1L5XX) where appropriate.

1. Renewals

At the end of a TPP period, the customer must select one of the following options within one month prior to the expirations date:

- a. Renew the service for a one, three, or five year TPP as provided in this tariff;
- b. Elect to disconnect the service upon expiration of the billing period; or
- c. Continue the service on a monthly basis at the current monthly extension rates.

All services under an existing TPP that are not renewed within the period stated above will revert to Option (1)c above and be billed at the current monthly extension rates.

2. Conversions

During a customer's TPP term, conversions may be made to a new TPP term of the same or greater length. The expiration date of the new service must be beyond the expiration date of the original TPP term. With the new TPP, the customer incurs no liability for the remaining months on the original TPP.

An Administrative Charge is applicable when customers renew or change the length of the TPP term.

/1/ Effective October 29, 2017, GigaMAN Service will no longer be available for new circuits. See footnote on Page 274.12.

(N)
(N)

ACCESS SERVICE

7. Special Access Service (Cont'd)

7.2 Service Descriptions (Cont'd)

7.2.13 Gigabit Ethernet Metropolitan Area Network (GigaMAN)^{/1/} (Cont'd)

(C)

F. Term Pricing Plan (TPP) (Cont'd)

3. Termination Liability

Customers requesting termination of service prior to expiration date of the TPP term will be liable for a termination charge equal to fifty percent (50%) of the Monthly Recurring Rate for the number of months remaining in the applicable TPP term, which is calculated as follows:

$(\text{Monthly Recurring Rate}) \times (\text{Months Remaining in TPP term}) \times (50\%) = \text{Termination Liability Charge}$

Example: A GigaMAN[®] Customer with \$6,000.00 monthly rate terminates service after 2 years with 1 year (12 months) remaining in a 3 year TPP. The termination liability charge would be calculated as:

$\$6,000 \times 12 \times .50 = \$36,000.00$ Termination Liability.

G. Moves

Moves involve a change in the physical location of one of the following:

- Service rearrangement;
- Point of Termination at the customer's premises; or
- Customer's premises.

Move charges are dependant upon the type of move requested by the customer.

1. Service Re-arrangement

Service rearrangements are changes to existing (installed) services, which do not result in either a change in the minimum period requirements, as set forth in Section 5.2.5 preceding, or a change in the physical location of the point termination at a customer or customer's end user premises, as described in Section 7.4.2.

/1/ Effective October 29, 2017, GigaMAN Service will no longer be available for new circuits. See footnote on Page 274.12.

(N)
(N)

ACCESS SERVICE

7. Special Access Service (Cont'd)

7.2 Service Descriptions (Cont'd)

7.2.13 Gigabit Ethernet Metropolitan Area Network (GigaMAN)^{/1/} (Cont'd)

(C)

G. Moves (Cont'd)

2. Moves Within the Same Building

When the move is to a new location within the same building, the Administration charge and Customer Connection charge for the service termination affected will apply. There will be no change in the minimum period requirements, as described in section 7.4.6.

3. Moves to a Different Building

Moves to a different building will be treated as a discontinuance and start of service and all associated nonrecurring charges will apply. New minimum period requirements will be established for the new services. The customer will also remain responsible for satisfying all outstanding minimum period charges for the discontinued service, as described in 7.4.6.

4. GigaMAN[®] customers subscribing to three (3) and five (5) year Term Pricing Plans may move one end of the GigaMAN[®] service per the following regulations:

- (a) A customer may move one end of the GigaMAN[®] service to a different premises in the same LATA, without incurring early termination liability charges for their existing GigaMAN[®] service, providing the following criteria are met, contingent upon the availability of fiber from premises to premises.
- Customers must have completed at least 15 months (for 3 year term plan), and 18 months (for 5 year term plan) of their existing GigaMAN[®] contracted term plan,
 - The customer subscribes to a new term pricing plan period that is greater than the remaining months in the existing term pricing plan,
 - Nonrecurring charges will apply where applicable,
 - Spare facilities and equipment must be available or special construction charges, as set forth in SBC Illinois Tariff No. 20, Part 2, Section 5 may apply.

/1/ Effective October 29, 2017, GigaMAN Service will no longer be available for new circuits. See footnote on Page 274.12.

(N)
(N)

ACCESS SERVICE

7. Special Access Service (Cont'd)

7.2 Service Descriptions (Cont'd)

7.2.13 Gigabit Ethernet Metropolitan Area Network (GigaMAN)^{1/1} (Cont'd)

(C)

G. Moves (Cont'd)

4. (Cont'd)

(a) (Cont'd)

The moved service will require a disconnect of the existing GigaMAN[®] service and placement of an order for the new GigaMAN[®] service for same customer of record as disconnected service.

The monthly rates for the new services(s) shall be those rates in effect at the time the new service(s) is being installed requiring a disconnect of the existing GigaMAN[®] service and placement of an order for new GigaMAN[®] service.

- (b) The GigaMAN[®] service installed without protection and customer subsequently request protection options after the GigaMAN[®] order has been completed, and customer premises locations remain the same. This will require a change to the customer premises based Telephone Company equipment. This change will be treated as an upgrade to the GigaMAN[®] service, and a new nonrecurring charge is applicable. This change will require a disconnect of the existing GigaMAN[®] service and placement of an order for the new GigaMAN[®] service for the same customer of record. With this upgrade the customer will experience an out of service condition.
- (c) The GigaMAN[®] service was installed with protection options and the customers subsequently requests a move of the channel termination within the same building afterwards. This request may require a change to the customer premises based Telephone Company equipment which will be determined by the Telephone Company. Nonrecurring charges as set forth in Section 7.5.15 following are applicable (one-half the nonrecurring charge for the channel termination). With this upgrade the customer will experience an out of service condition.

H. Mileage Measurement

The mileage is calculated on the airline distance between the locations involved, i.e., the serving wire centers associated with two customer-designated premises, the serving wire center associated with a customer designated premises and an international boundary point, a serving wire center associated with a customer designated premises and a Telephone Company Hub, a serving wire center associated with a customer designated premises and a WATS Serving Office as described in Section 7.4.7.

^{1/1} Effective October 29, 2017, GigaMAN Service will no longer be available for new circuits. See footnote on Page 274.12.

(N)
(N)

7.2 Service Descriptions (Cont'd)

7.2.13 Gigabit Ethernet Metropolitan Area Network (GigaMAN®)^{/1/} (Cont'd)

(C)

I. Upgrades

An upgrade is considered an increase in speed or capacity when comparing GigaMAN® Service to the new service. Customers will be permitted to upgrade to a higher-speed service provided by the Company, without incurring Termination Charges, given all of the following conditions are met:

- (1) The customer must issue a disconnect order for the existing GigaMAN® Service and place a service order for the new higher-speed service at the same locations such that there is no more than 90 days overlap in service.
- (2) The new higher-speed service term must be equal to or greater than the remaining time left on the existing GigaMAN® term.
- (3) The existing GigaMAN® Service must have been in service for a minimum period of 15 months for a 36-month term or 18 months for a 60-month term. Existing GigaMAN® Service with 12-month terms will not be eligible for this upgrade option.

The monthly rates for the new service will be those rates in effect at the time the new service is installed.

Migration to AT&T Dedicated Ethernet

Customers subscribing to GigaMAN® Service may migrate to AT&T Dedicated Ethernet provided by the Company without incurring Termination Charges, subject to the following conditions:

- (1) The new AT&T Dedicated Ethernet and the existing GigaMAN® Service must be billed to the same customer of record at the same customer locations.
- (2) The customer's existing service must have been in place for at least 12 months.
- (3) The minimum term for the new service must be at least 12 months and must be equal to or greater than the number of months remaining in the customer's existing Term Payment Plan (TPP) term.
- (4) The speed (capacity/bandwidth) of the new service must be equal to or greater than that of the existing service.
- (5) The customer must issue a disconnect order for the replaced GigaMAN® Service to be effective within 90 days after the AT&T Dedicated Ethernet installation date. The disconnect and new orders must be coordinated through the Company.
- (6) If overlapping service is required, the period will be limited to not more than 90 days and billing will apply to both services during the time both services are available.

/2/
(N)

(N)

/1/ Effective October 29, 2017, GigaMAN Service will no longer be available for new circuits. See footnote on Page 274.12.

(N)

/2/ Material now appears on Original Page 274.12.6.1 in this Section.

(N)

7.2 Service Descriptions (Cont'd)

7.2.13 Gigabit Ethernet Metropolitan Area Network (GigaMAN[®])^{/1/} (Cont'd)

(N)

J. Modification of Access Service

/1/

The customer may request a modification of its Access Order at anytime prior to notification by Illinois Bell Telephone Company that service is available for the customer's use. Illinois Bell Telephone Company will make every effort to accommodate a requested modification when it is able to do so with the normal work force assigned to complete such an order within normal business hours. If the modification cannot be made with the normal work force during normal business hours, Illinois Bell Telephone Company will notify the customer. If the customer still desires the Access Order Modification, Illinois Bell Telephone Company will schedule a new service date. All Charges for Access Order modifications will apply on a per occurrence basis as described in Section 5.2.2.

/1/

/1/ Material previously appeared on 1st Revised Page 274.12.6 in this Section.

7.2 Service Descriptions (Cont'd)

7.2.13 Gigabit Ethernet Metropolitan Area Network (GigaMAN)^{/1/} (Cont'd)

(C)

K. Optional Features

1. Protection Options

Protection options are provisioned on the customers GigaMAN[®] service and the customer is not required to purchase a second GigaMAN[®] circuit for protection options. Protection options are applied on a per GigaMAN[®] circuit basis only.

Protection options are available where facilities and/or operating conditions permit. Where facilities and/or operating conditions do not permit, Special Construction charges as set forth in SBC Illinois Tariff No. 20, Part 2, Section 5, may apply. Protection options provide additional levels of reliability to GigaMAN[®] service. There are multiple protection options offered. The options do not need to be the same, but both Channel Terminations of the GigaMAN[®] service must include some form of protection for the service to be considered protected.

The Telephone Company will design the protection optional based upon the configuration of the customers GigaMAN[®] service.

Additional repeaters may be necessary on the protected path as determined by the Utility as set forth in Section 7.4.16(B) following.

Protection switching in less than 50 milliseconds will occur on GigaMAN[®] services with Protection options, with the exception of Power Protection which is not switch protected. Protection options are offered with a Service Level Agreements (SLA) that target a service availability of 99.999%.

/1/ Effective October 29, 2017, GigaMAN Service will no longer be available for new circuits. See footnote on Page 274.12.

(N)
(N)

ACCESS SERVICE

7. Special Access Service (Cont'd)

7.2 Service Descriptions (Cont'd)

7.2.13 Gigabit Ethernet Metropolitan Area Network (GigaMAN)^{/1/} (Cont'd)

(C)

K. Optional Features (Cont'd)

1. Protection Options (Cont'd)

SLA's are not applicable in the event of cable cut in any unprotected portion of the GigaMAN[®] service fiber path or when customer requested modifications to the service require down time.

GigaMAN[®] Protection Options are offered as follows:

- (a) Equipment Only Protection – per Termination End.
- (b) Equipment Plus Fiber Path Protection
 - (1) Equipment Plus Alternate Wire Center Path Protection – per Terminating End
 - (2) Equipment Plus Channel Termination Path Protection – per Terminating End
 - (3) Inter Wire Center Path Protection – per Interoffice Segment
- (c) Power Protection

2. Equipment Only Protection

Equipment Only Protection offers one GigaMAN[®] signal routed on two different fiber pairs that co-exist in the same cable and conduit structure that terminate into two distinct and separate network terminating equipment devices at the customer's premises.

All protected configurations have one working and one standby path. In event of a failure of the customer's transmission path, the GigaMAN[®] equipment will switch, within 50 milliseconds of detection, the customer's transmission to a dedicated standby path. In the event of a failure to both fiber transmission paths, an out of service condition will result. This form of protection can only be ordered per channel termination for each protected GigaMAN[®] service, and may also apply to the Inter-Wire center segment if the GigaMAN[®] service is served by more than one serving wire center.

/1/ Effective October 29, 2017, GigaMAN Service will no longer be available for new circuits. See footnote on Page 274.12.

(N)
(N)

ACCESS SERVICE

7. Special Access Service (Cont'd)

7.2 Service Descriptions (Cont'd)

7.2.13 Gigabit Ethernet Metropolitan Area Network (GigaMAN)^{/1/} (Cont'd)

(C)

K. Optional Features (Cont'd)

2. Equipment Only Protection (Cont'd)

If a customer requests complete protection extending to the SBC serving wire center from their premises location when utilizing Equipment Protection, they must request diverse entrance facilities into their premises at each end from the nearest SBC splice point closest to the customer premises location, this work is subject to special construction charges as set forth in SBC Illinois Tariff No. 20, Part 2, Section 5.

3. Equipment Plus Fiber Path Protection

Equipment Plus Fiber Path Protection offers varying degrees of path protection for each channel termination of the GigaMAN® service, plus the inter-wire segment if the service is served by more than one serving wire center, and is offered as follows:

(a) Equipment Plus Alternate Wire Center Path Protection

Equipment Plus Alternate Wire Center Path Protection offers one GigaMAN® signal routed over one fiber pair of the protected GigaMAN® service from the customer's premises to the customer's normal serving wire center, and a duplicate GigaMAN® signal routed over a diversely routed fiber pair to the alternate wire center selected by the Telephone Company.

If any location(s) between the two fiber paths is closer than ten feet, the location(s) will be disclosed to the customer. The customer will determine accept the engineered path or agree to pay special construction charges as set forth in SBC Illinois Tariff No. 20, Part 2, Section 5, to provide a completely diverse route where the ten foot allowance is not acceptable to the customer.

Where facilities are not available, the Customer may select Equipment Only Protection for an inter-office segment. This option can be selected for one or both channel terminations of the GigaMAN service.

All protected configurations have one working and one standby path. In the event of a failure of the customer's transmission path, the GigaMAN service will switch to a dedicated standby path within 50 milliseconds of detection. In the event of a failure to both fiber transmission paths, an out of service condition will result. This form of protection can only be ordered per channel termination for each protected GigaMAN service.

^{/1/} Effective October 29, 2017, GigaMAN Service will no longer be available for new circuits. See footnote on Page 274.12.

(N)
(N)

ACCESS SERVICE

7. Special Access Service (Cont'd)

7.2 Service Descriptions (Cont'd)

7.2.13 Gigabit Ethernet Metropolitan Area Network (GigaMAN)^{/1/} (Cont'd)

(C)

K. Optional Features (Cont'd)

3. Equipment Plus Fiber Path Protection (Cont'd)

(a) Equipment Plus Alternate Wire Center Path Protection (Cont'd)

If a customer requests complete protection extending to the SBC serving wire center from their premises location when utilizing Equipment Protection Plus Alternate Wire Center Path Protection, they must request diverse entrance facilities into their premises at each end from the nearest SBC splice point closest to the customer premise location. This work is subject to special construction charges as set forth in SBC Illinois Tariff No. 20, Part 2, Section 5.

(b) Equipment Plus Channel Termination Path Protection

Equipment Plus Channel Termination Path Protection offers a duplicate GigaMAN[®] signal routed over two diversely routed fiber paths, to the customer's normal serving wire center.

If any location(s) between two fiber paths is closer than ten feet, the location(s) will be disclosed to the customer. The customer will determine whether to accept the engineered path or agree to pay special construction charges as set forth in SBC Illinois Tariff No. 20, Part 2, Section 5, to provide a completely diverse route where the ten foot allowance is not acceptable to the customer.

All protected configurations have one working and one standby path. In the event of a failure of the customer's transmission path, GigaMAN[®] technology will switch within 50 milliseconds of detection, the customer's transmission to a dedicated standby path. In the event of failure to both fiber transmission to a dedicated standby path. In the event of a failure to both fiber transmission paths, an out to service condition will result.

This form of protection can only be ordered per channel termination for each protected GigaMAN[®] service, from the customers premises location, or from the manhole/splice point nearest the customer premises), to the Utility serving wire center.

/1/ Effective October 29, 2017, GigaMAN Service will no longer be available for new circuits. See footnote on Page 274.12.

(N)
(N)

ACCESS SERVICE

7. Special Access Service (Cont'd)

7.2 Service Descriptions (Cont'd)

7.2.13 Gigabit Ethernet Metropolitan Area Network (GigaMAN)^{/1/} (Cont'd)

(C)

K. Optional Features (Cont'd)

3. Equipment Plus Fiber Path Protection (Cont'd)

(b) Equipment Plus Channel Termination Path Protection (Cont'd)

If a customer requests complete protection extending to the SBC serving wire center from their premises location when utilizing Equipment Protection Plus Channel Termination Path Protection, they must request diverse entrance facilities into their premises at each end from the nearest SBC splice point closest to the customer premises location. This work is subject to special construction charges as set forth in SBC Illinois Tariff No. 20, Part 2, Section 5.

(c) Inter-Wire Center Path Protection

Inter-Wire Center Path Protection offers a duplicate GigaMAN[®] signal routed over two diversely routed fiber paths, between the two serving wire centers or alternate wire centers. Path protection starts at the nearest manhole outside the Telephone Company serving wire center. Inter-Wire Center Path Protection must be ordered with either Equipment Only, Channel Termination Path Protection or Alternate Wire Center Path Protection.

If any location(s) between the two fiber paths is closer than ten feet, the location(s) will be disclosed to the customer. The customer will determine to accept the engineered path or agree to pay special construction charges as set forth in SBC Illinois Tariff No. 20, Part 2, Section 5, to provide a completely diverse route where the ten foot allowance is not acceptable to the customer.

All protected configurations have one working and one standby path. In the event of a failure of the customer's transmission path, GigaMAN[®] technology will switch, within 50 milliseconds of detection, the customer's transmission to a dedicated standby path. In the event of a failure to both fiber transmission paths, an out of service condition will result.

/1/ Effective October 29, 2017, GigaMAN Service will no longer be available for new circuits. See footnote on Page 274.12.

(N)
(N)

ACCESS SERVICE

7. Special Access Service (Cont'd)

7.2 Service Descriptions (Cont'd)

7.2.13 Gigabit Ethernet Metropolitan Area Network (GigaMAN)^{/1/} (Cont'd)

(C)

K. Optional Features (Cont'd)

3. Equipment Plus Fiber Path Protection (Cont'd)

(d) Power Protection

Power Protection provides GigaMAN[®] customers with battery backup for up to eight (8) hours to maintain GigaMAN[®] equipment in the event of a commercial AC power failure.

Power Protection is offered on a per equipment bay capacity basis, per customer premise, and depending upon the number of GigaMAN[®] services for the GigaMAN[®] customer of record. The Telephone Company will apply the power protection rate elements based upon the circuit capacity, and more than one element may be applicable. The Telephone Company will determine the design and engineering requirements for Power Protection for GigaMAN[®] customers.

Customers in multi-tenant buildings will require separate equipment and bays dedicated to each customer.

The addition of Power Protection to existing GigaMAN[®] service may result in temporary service interruption.

Power Protection is not available for installations using the wall mounted cabinet.

Customers are responsible for providing floor space for power equipment as set forth in Section 2.3.3 preceding.

/1/ Effective October 29, 2017, GigaMAN Service will no longer be available for new circuits. See footnote on Page 274.12.

(N)
(N)

ACCESS SERVICE

7. Special Access Service (Cont'd)

7.2 Service Descriptions (Cont'd)

7.2.13 Gigabit Ethernet Metropolitan Area Network (GigaMAN®)^{/1/} (Cont'd)

(C)

L. Allowance for Service Interruptions

GigaMAN® (Not Fully Protected)

The GigaMAN® outage credits listed below are in lieu of, and not in addition to, the outage credit allowances provided for in the General Conditions Section of this Guidebook.

A service is interrupted when it becomes unusable to the customer because of a failure of a facility component used to furnish service under this Guidebook, or in the event that the protective controls applied by the Company result in the complete loss of service by the customer. An interruption period starts when an inoperative service is reported to the Company and the Company confirms that continuity has been lost, and ends when the service is operative.

In case of an interruption to GigaMAN® service, allowance for the period of interruption, if not due to the negligence of the customer or the customer's end user, shall be as follows: no credit shall be allowed for an interruption of less than 10 seconds. The customer shall be credited for an interruption of 10 seconds or more as follows: the credit shall be at the rate of 10/8640 of the monthly charges for the service for each period of 5 minutes or major fraction thereof that the interruption continues. The credit allowance(s) for service interruptions shall not exceed 100 percent of the applicable monthly rates.

The Company's failure to provide or maintain services under this Guidebook shall be excused by force majeure events such as, but not limited to, an earthquake, hurricane, flood, fire, storms, tornadoes, explosion, lightning, power surges or failure, fiber cuts, strikes or labor disputes, acts of war, civil disturbances, acts of civil or military authorities or public enemy, governmental orders, civil commotion, criminal actions taken against the Company, acts of God and other circumstances beyond the Company's reasonable control.

/1/ Effective October 29, 2017, GigaMAN Service will no longer be available for new circuits. See footnote on Page 274.12.

(N)
(N)

ACCESS SERVICE

7. Special Access Service (Cont'd)

7.2 Service Descriptions (Cont'd)

(T)

7.2.13 Gigabit Ethernet Metropolitan Area Network (GigaMAN®)^{/1/} (Cont'd)

(C)

L. Allowance for Service Interruptions

GigaMAN® (Fully Protected)

A Service Level Agreement (SLA) is offered with fully-protected GigaMAN® service, which provides the customer with a performance commitment that includes financial compensation if the service does not perform as described.

Service availability performance 99.999% is offered on a GigaMAN® service with protection (defined as Equipment Plus Path Protection) for every segment of the service.

If this SLA is not met, the customer will be entitled to a credit equal to 100% of the monthly rate for the period of the interruption of service affecting that rate element(s), not to exceed the total monthly charges for the services. Only one such credit in a billing period will apply.

The service is considered interrupted when the customer reports a service disruption of greater than ten (10) consecutive seconds to the Telephone Company and the Telephone Company confirms that continuity of its service has been lost.

In order to qualify for this credit, the outage must be determined by the Telephone Company to be in its network and the failure occurred in that part of the service with the protection. SLA adjustments are not available in the event of a cable cut, in any unprotected portion of the GigaMAN® service fiber path, or due to customer requested modifications to the service that may require down time.

SLAs are applicable to customers who purchase Equipment Plus Alternate Wire Center Path Protection or Equipment Plus Channel Termination Path Protection on both ends of a GigaMAN® service (both channel terminations) as well as Inter-Wire Center Path Protection when applicable. The customer is responsible for notifying the Telephone Company when the service parameter within the calendar month falls below the committed level. The customer must request a service credit adjustment within 25 days after the end of the month when the failure occurred.

7.3 Network Channel Interface and Network Channel Codes

The Network Channel Interface (NCI) and the Network Channel codes (NC) and all other associated material which previously appeared in this section are now contained in Ameritech Technical Publication AM-TR-TMO-000080.

/1/ Effective October 29, 2017, GigaMAN Service will no longer be available for new circuits. See footnote on Page 274.12.

(N)

(N)

ACCESS SERVICE

7. Special Access Service (cont'd)

7.4 Rate Regulations (cont'd)

7.4.3 Surcharge for Special Access Service (cont'd)

(E) Application of Rates (cont'd)

- (2) In the case of multipoint Special Access Service, one Special Access Surcharge will apply for each termination at a customer designated premises except that no surcharge applies at the customer designated premises at which the Access Service is connected to Interstate Service.
- (3) The Telephone Company will bill the surcharge to the customer who orders the Special Access Service unless the Service is exempt as set forth in (B) preceding.

7.4.4 Message Station Equipment Recovery Charge

The Message Station Equipment Recovery Charge is a charge to recover that portion of message station equipment that is assigned to Special Access Service.

Pursuant to CC Docket 83-1145 Memorandum Opinion and Order adopted by the Federal Communications Commission on November 8, 1984, and released on November 9, 1984, this charge is assessed only to those customers to which the Special Access Surcharge applies. The rate for the Message Station Equipment Recovery Charge is set forth in 7.5.14 following.

(T)

ACCESS SERVICE

7. Special Access Service (Cont'd)

7.4 Rate Regulations (Cont'd)

7.4.10 Optional Payment Plan (OPP) for Base Rate, DS1, DS3, OC-3, OC-12, OC-48 Services, TV Analog Video Services, SONET Express Services^{/1/} and Serial Component Video Service (cont'd)

(D)

(D) Conversion of service to New OPP, Higher Speed, or SONET Xpress Service^{/1/}

During a customer's OPP term, conversion may be made to a new OPP term of the same or different length or to a higher speed service or to the same or higher speed SONET Xpress^{/1/} service. If the expiration date for the new service or OPP term is beyond the end of the original OPP term, the remaining OPP charges and any nonrecurring termination charges for the original term will not apply. If no physical changes are made to the service, the Administrative Charge, the Design and Central Office Connection Charge and the Customer Connection Charge will not apply.

^{/1/} Effective April 24, 2012, SONET Xpress is available only to existing Customers, for existing service arrangements. Existing Customers may continue to receive service under existing service arrangements, or on a month-to-month basis after their existing service arrangements expire, until SONET Xpress is discontinued.

ACCESS SERVICE

7. Special Access Service (Cont'd)

7.5 Rates and Charges (Cont'd)

7.5.10 Optical Carrier Network (OCN) Point-to-Point Service

(T)

(A) OC-3/OC-3c Service*

				Recurring Charges		Optional Payment
		USOC	Monthly	12 Mo.	36 Mo.	60 Mo.
(1)	Local Distribution Channel					
	- Per Point of Termination					
	Terminating Bit Rate	TMECS	\$1,900.00	\$1,600.00	\$1,300.00	\$1,050.00
	155.52 Mbps					
(2)	Channel Mileage Termination					
	- Per Point of Termination					
	- Per Point of Mileage	CM6	775.00	469.00	399.00	375.00
	Termination 155.52 bps					
(3)	Channel Mileage	1L5XX	450.00	300.00	250.00	200.00
	- Per Mile 155.52 Mbps					
(4)	Optional Features and Functions					
(a)	OC-3 Add/Drop Multiplexing**	MPECX	1,250.00	1,107.00	939.00	775.00
	- Per Arrangement					

* Effective April 11, 2002, the 48-month Optional Payment Plans were grandfathered for existing customers until their term plan expires, at which time any renewed services or new contracts established on or after April 11, 2002, is no longer be available. Applicable rates for 48-month Optional Payment Plans can be found in Section 7.5.16, following.

** Concatenated services not available.

ACCESS SERVICE

7. Special Access Service (Cont'd)

7.5 Rates and Charges (Cont'd)

7.5.13 Gigabit Ethernet Metropolitan Area Network (GigaMAN®)^{/1/}

(C)

A. GigaMAN® Service

	USOC	Monthly Extension	Recurring Charges Term Pricing Plan		
			12 Months	36 Months	60 Months
(1) Local Distribution Channel					
- Per Point of Termination Terminating Bit Rate 1 Gbps	TMECS	\$3,800.00	\$3,300.00	\$2,850.00	\$2,500.00
(2) Channel Mileage Termination					
- Per Point of Termination					
- Per Point of Mileage Termination 1 Gbps	CM6	\$125.00	\$125.00	\$100.00	\$50.00
(3) Channel Mileage					
- Per Mile 1 Gbps	1L5XX	\$125.00	\$125.00	\$100.00	\$75.00
(4) Repeater					
- each	VU4	\$2,500.00	\$2,400.00	\$1,150.00	\$850.00
(5) Diversity Options					

	USOC	Monthly Extension	Term Pricing Plan			
			12 Months	36 Months	60 Months	NRC
(a) Local Channel Diversity						
- Per Channel Terminating Bit Rate 1 Gbps	CPALX	\$750.00	\$750.00	\$750.00	\$750.00	\$0.00

/1/ Effective October 29, 2017, GigaMAN Service will no longer be available for new circuits. The Company will no longer accept orders for adds, moves, changes or new term plans for GigaMAN Service, and existing term plans may not be renewed, converted or extended. Following the expiration of a customer's existing GigaMAN term agreement, service will be provided on a month-to-month basis at the applicable monthly extension rates until the service is discontinued.

(N)
|
(N)

ACCESS SERVICE

7. Special Access Service (Cont'd)

7.5 Rates and Charges (Cont'd)

7.5.13 Gigabit Ethernet Metropolitan Area Network (GigaMAN®)^{/1/} (Cont'd)

(C)

A. GigaMAN® Service (Cont'd)

(5) Diversity Options (Cont'd)	USOC	Monthly Extension	12 Months	Recurring Charges Term Pricing Plan		NRC
				36 Months	60 Months	
(b) <u>Inter-Wire Diversity</u> - Per Circuit Terminating Bit Rate 1 Gbps	CPATX	\$500.00	\$500.00	\$500.00	\$500.00	\$0.00
(c) <u>Alternate Wire Center Diversity</u> - Per Channel Terminating Bit Rate 1 Gbps	CPAAX	1,200.00	1,200.00	1,200.00	1,200.00	0.00
(6) Protection - per GigaMAN® service arranged						
(a) <u>Equipment Only Protection</u> - Per Terminating End	CPAEX	1,500.00	1,375.00	1,050.00	900.00	625.00
(b) <u>Equipment Plus Alternate Wire Center Path Protection</u> - Per Terminating End	CPAFX	2,460.00	2,050.00	1,600.00	1,400.00	1,400.00
(c) <u>Equipment Plus Channel Termination (Local Channel) Path Protection</u> - Per Terminating End	CPAGX	2,190.00	1,825.00	1,425.00	1,225.00	1,225.00

/1/ Effective October 29, 2017, GigaMAN Service will no longer be available for new circuits. See footnote on Page 418.2.

(N)
(N)

ACCESS SERVICE

7. Special Access Service (Cont'd)

7.5 Rates and Charges (Cont'd)

7.5.13 Gigabit Ethernet Metropolitan Area Network (GigaMAN®)^{/2/} (Cont'd)

(C)

A. GigaMAN® Service (Cont'd)

	USOC	Monthly Extension	12 Months	Recurring Charges Term Pricing Plan		NRC	
				36 Months	60 Months		
(6) Protection - per GigaMAN® service arranged (Cont'd)							
(d) <u>Inter-Wire Center Path Protection</u> - Per Circuit	CPAHX	\$475.00	\$375.00	\$150.00	\$100.00	\$625.00	
(e) Power Protection ^{/1/}	VBBGX	700.00	625.00	480.00	435.00	475.00	(T)

/1/ Power Protection rate elements are applicable as set forth in 7.2.13(K)(d).

/2/ Effective October 29, 2017, GigaMAN Service will no longer be available for new circuits. See footnote on Page 418.2.

(T)
(N)
(N)

Issued: September 14, 2017

Effective: October 29, 2017

**By W. Karl Wardin, Regional Vice President - Regulatory
225 West Randolph Street, Chicago, Illinois 60606**

ACCESS SERVICE

7. Special Access Service (Cont'd)

7.5 Rates and Charges (Cont'd)

/1/

/1/ Material now appears on 2nd Revised Page 445 in this Section.

Issued: September 14, 2017

Effective: October 29, 2017

**By W. Karl Wardin, Regional Vice President - Regulatory
225 West Randolph Street, Chicago, Illinois 60606**

ACCESS SERVICE

7. Special Access Service (Cont'd)

7.5 Rates and Charges (Cont'd)

7.5.14 Message Station Equipment Recovery Charge and Special Access Surcharge

(T)

	USOC	Monthly Rate	
Message Station Equipment Recovery Charge			/1/
- Per Special Access Surcharge Assessed	UTM	None	/1/
Special Access Surcharge			(T)
- Per surcharge assessed	S25	\$25.00	

/1/ Material previously appeared on 1st Revised Page 444 in this Section.

Issued: September 14, 2017

Effective: October 29, 2017

**By W. Karl Wardin, Regional Vice President - Regulatory
225 West Randolph Street, Chicago, Illinois 60606**

ACCESS SERVICE

7. Special Access Service (Cont'd)

7.5 Rates and Charges (Cont'd)

7.5.15 Installation and Rearrangement Charges (Cont'd)

	Administrative Charge per order		Design and Central Office Connection Charge, per circuit	Customer Connection Charge per termination	
	USOC	ORCMX	NRBCL	NRBBL	
GigaMAN[®] ^{/2/}					(C)
12 Month		\$60.00	230.00	\$1,500.00	
36 Month		60.00	230.00 ^{/1/}	1,500.00 ^{/1/}	(T)
60 Month		60.00	230.00 ^{/1/}	1,500.00 ^{/1/}	(T)
Renewal GigaMAN [®] Service 1, 3, & 5 Year TPP		60.00	N/A	N/A	

/1/ The Administrative, Design Central Office Connection and Customer Connection nonrecurring charges will be waived for 36 and 60-months terms for new service.

/2/ Effective October 29, 2017, GigaMAN Service will no longer be available for new circuits. The Company will no longer accept orders for adds, moves, changes or new term plans for GigaMAN Service, and existing term plans may not be renewed, converted or extended. Following the expiration of a customer's existing GigaMAN term agreement, service will be provided on a month-to-month basis at the applicable monthly extension rates until the service is discontinued.

(N)
|
(N)

ACCESS SERVICE

16. Ameritech Interconnection Services (Cont'd)

16.5 Rates and Charges (Cont'd)

(4) Ameritech Cross-Connection Service for Interconnection (ACCSI) - for all AIS Services*#
(Cont'd)

	USOC	Monthly	Nonrecurring Charge
B. Special Access Connections: (cont'd)			
DS1	CXCDX	\$ 6.89	-
DS3	CXCEX	1.01	-
OC-3	CXCMX/OCCCX	104.00	-
OC-12	CXCNX/OCCDX	550.00	-
OC-48	CXCZX/OCCFX	1,100.00	-
OC-192	CZCAX	8,250.00	-
WaveMAN SM			
OC-48	CXCZX	\$1,880.00	\$400.00
OC-192	C2CAX	3,760.00	400.00
Ethernet Optical Collocation Cross-Connect	CCCA2	750.00	400.00
GigaMAN ^{®/1/} 1 Gigabit Ethernet	OCLGX	1,500.00	400.00
AT&T Switched Ethernet Service SM 1 Gigabit Ethernet	OCLGX	0.45	97.98
OPT-E-MAN [®] 1 Gigabit Ethernet	OCLGX	100.00	200.00
CSME 1 Gigabit Ethernet	OCLGX	100.00	200.00
AT&T Switched Ethernet Service SM 10 Gigabit Ethernet	OCLHX	0.45	97.98
DecaMAN ^{®/1/} 10 Gigabit Ethernet	OCLHX	3,500.00	400.00

* ACCSI charges will not apply to ACCSI arrangements used exclusively by a Connecting Carrier for AEOIS (ILL. C.C. No. 20, Part 23, Section 2) and/or Telecommunications Channel Services until such ACCSI arrangement is used for any other purpose.

Refer to Section 20 for Illinois exceptions.

/1/ Effective October 29, 2017, GigaMAN and DecaMAN Services will no longer be available for new circuits. The Company will no longer accept orders for adds, moves, changes or new term plans for GigaMAN or DecaMAN Services, and existing term plans may not be renewed, converted or extended. Following the expiration of a customer's existing GigaMAN or DecaMAN term agreement, service will be provided on a month-to-month basis at the applicable monthly extension rates until the service is discontinued.

(C)

(C)

(N)

(N)

ACCESS SERVICE

21. Metropolitan Statistical Area Access Service

21.3 Services Available in an MSA

The following services are available in MSAs with Full and Limited Service Relief:

Special Access	Switched Access/Dedicated Transport	
Metallic Service	Voice Grade	
Telegraph Grade Service	LT-1	
Voice Grade Service	LT-3	
Program Audio Service	Switched SONET	
Video Service	Signaling	
AIT Base Rate Service	SS7	
AIT Direct Digital Service	Telecom Relay Service	
AIT DS1		
AIT DS3		
Optical Carrier Network (OCN) Point-to-Point Service		
AIT OC-3 Dedicated Ring		
AIT OC-12 Dedicated Ring		
AIT OC-48 Dedicated Ring		
AIT OC-192 Dedicated Ring		
Gigabit Ethernet Metropolitan Area Network (GigaMAN) ^{/3/}		(C)
Multi-Service Optical Network (MON) Ring Service ^{/2/}		
SONET Express Service ^{/1/}		
DecaMAN ^{/3/} (10 Gigabit Ethernet Metropolitan Area Network)		(C)
WaveMAN ^{/4/} (Wavelength Metropolitan Area Network)		/4/

/1/ Effective April 24, 2012, SONET Xpress is available only to existing Customers, for existing service arrangements. Existing Customers may continue to receive service under existing service arrangements, or on a month-to-month basis after their existing service arrangements expire, until SONET Xpress is discontinued.

/2/ Effective March 8, 2013, new Multi-service Optical Network (MON) Ring Service term plans are no longer available. Following the expiration of their existing term plans, MON Ring Service Customers may continue to purchase service on a month-to-month basis. Customers will be permitted to modify their existing service and will be able to add new circuits to their existing service, but will not be permitted to add new nodes in new locations. Any such new circuits will be subject to, and coterminous with, the Customer's existing term payment plan or term agreement for the service to which they are added.

/3/ Effective October 29, 2017, GigaMAN and DecaMAN Services will no longer be available for new circuits. The Company will no longer accept orders for adds, moves, changes or new term plans for GigaMAN or DecaMAN Services, and existing term plans may not be renewed, converted or extended. Following the expiration of a customer's existing GigaMAN or DecaMAN term agreement, service will be provided on a month-to-month basis at the applicable monthly extension rates until the service is discontinued.

/4/ Material now appears on this page now appears on Original Page 800.1 in this Section.

(N)
|
(N)

ACCESS SERVICE

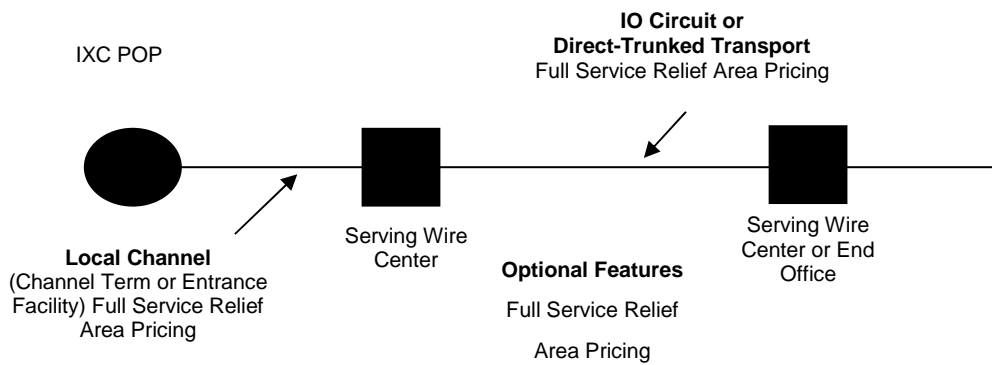
21. Metropolitan Statistical Area Access Service

21.4 Rate Regulations

- (A) Figure 1 illustrates services provided totally from an MSA located in a Full Service Relief Area. The rates and charges for all associated rate elements for services in a Full Service Relief Area are contained in Section 21.5.

/1/

Full Service Relief Area – Figure 1



/1/

/1/ Material previously appeared on 8th Revised Page 800 in this Section.

ACCESS SERVICE

21. Metropolitan Statistical Area Access Service (Cont'd)

21.5 Rates and Charges (Cont'd)

21.5.2 Special Access Service (Cont'd)

21.5.2.11 Installation and Rearrangement Charges (Cont'd)

	Administrative Charge per order	Design and Central Office Connection Charge, per circuit	Customer Connection Charge per termination	
	USOC	ORCMX	NRBCL	NRBBL
Direct Digital Service - All Speed	\$60.00	\$550.00	\$715.00	
Base Rate Service - All Speeds	50.00	175.00	225.00	
GigaMAN ^{®/2/} 12-Month	60.00	N/A	\$1,500.00	(C)
36-Month	60.00 ^{/1/}	N/A	1,500.00 ^{/1/}	
60-Month	60.00 ^{/1/}	N/A	1,500.00 ^{/1/}	
Renewal GigaMAN [®] Service ^{/2/}	60.00	N/A	N/A	(C)
Ethernet 100 Base	60.00			
Ethernet 1000 Base	60.00			

/1/ The Administrative and Customer Connection nonrecurring charges will be waived for 36- and 60-month terms for new service.

/2/ Effective October 29, 2017, GigaMAN Service will no longer be available for new circuits. The Company will no longer accept orders for adds, moves, changes or new term plans for GigaMAN Service, and existing term plans may not be renewed, converted or extended. Following the expiration of a customer's existing GigaMAN term agreement, service will be provided on a month-to-month basis at the applicable monthly extension rates until the service is discontinued.

(N)
|
(N)

ACCESS SERVICE

21. Metropolitan Statistical Area Access Service (Cont'd)

21.5 Rates and Charges (Cont'd)

21.5.2 Special Access Service (Cont'd)

21.5.2.16 Gigabit Ethernet Metropolitan Area Network (GigaMAN®)^{/1/}

(C)

	USOC	Monthly Extension	Recurring Charges Term Pricing Plan			
			12 Months	36 Months	60 Months	
(1) Local Distribution Channel						
- Per Point of Termination Terminating Bit Rate 1 Gbps	TMECS	\$3,800.00	\$3,300.00	\$2,850.00	\$2,500.00	
(2) Channel Mileage Termination						
- Per Point of Termination						
- Per Point of Mileage Termination 1 Gbps	CM6	125.00	125.00	100.00	50.00	
(3) Channel Mileage						
- Per Mile 1 Gbps	1L5XX	125.00	125.00	100.00	75.00	
(4) Repeater						
- each	VU4	\$2,500.00	\$2,400.00	\$1,150.00	\$850.00	
			Term Pricing Plan			
	USOC	Monthly Extension	12 Months	36 Months	60 Months	NRC
(5) Diversity Options						
(a) Local Channel Diversity						
- Per Channel Terminating Bit Rate 1 Gbps	CPALX	\$750.00	\$750.00	\$750.00	\$750.00	\$0.00

/1/ Effective October 29, 2017, GigaMAN Service will no longer be available for new circuits. The Company will no longer accept orders for adds, moves, changes or new term plans for GigaMAN Service, and existing term plans may not be renewed, converted or extended. Following the expiration of a customer's existing GigaMAN term agreement, service will be provided on a month-to-month basis at the applicable monthly extension rates until the service is discontinued.

(N)
|
(N)

ACCESS SERVICE

21. Metropolitan Statistical Area Access Service (Cont'd)

21.5 Rates and Charges (Cont'd)

21.5.2 Special Access Service (Cont'd)

21.5.2.16 Gigabit Ethernet Metropolitan Area Network (GigaMAN®)^{/1/} (Cont'd)

(C)

	USOC	Monthly Extension	Recurring Charges Term Pricing Plan			NRC
			12 Months	36 Months	60 Months	
(5) Diversity Options (Cont'd)						
(b) <u>Inter-Wire Diversity</u> - Per Channel Terminating Bit Rate 1 Gbps	CPATX	\$ 500.00	\$ 500.00	\$ 500.00	\$ 500.00	\$0.00
(c) <u>Alternate Wire Center Diversity</u> - Per Channel Terminating Bit Rate 1 Gbps	CPAAX	1,200.00	1,200.00	1,200.00	1,200.00	0.00
(6) Protection -per GigaMAN® service arranged						
(a) <u>Equipment Only Protection</u> - Per Terminating End	CPAEX	1,500.00	1,375.00	1,050.00	900.00	625.00
(b) <u>Equipment Plus Alternate Wire Center Path Protection</u> - Per Terminating End	CPAFX	2,460.00	2,050.00	1,600.00	1,400.00	1,400.00
(c) <u>Equipment Plus Channel Termination (Local Channel) Path Protection</u> - Per Terminating End	CPAGX	2,190.00	1,825.00	1,425.00	1,225.00	1,225.00

/1/ Effective October 29, 2017, GigaMAN Service will no longer be available for new circuits. The Company will no longer accept orders for adds, moves, changes or new term plans for GigaMAN Service, and existing term plans may not be renewed, converted or extended. Following the expiration of a customer's existing GigaMAN term agreement, service will be provided on a month-to-month basis at the applicable monthly extension rates until the service is discontinued.

(N)
|
(N)

ACCESS SERVICE

21. Metropolitan Statistical Area Access Service (Cont'd)

21.5 Rates and Charges (Cont'd)

21.5.2 Special Access Service (Cont'd)

21.5.2.17.1 10 Gigabit Ethernet Metropolitan Area Network (DecaMAN[®])/1/

(C)

(a) Recurring Charges

(1) LAN-PHY

	USOC	Monthly Extension	12 Mo.	Term Pricing Plan			NRC
				24 Mo.	36 Mo.	60 Mo.	
(a) Local Distribution Channel							
- Per Point of Termination Terminating Bit Rate 10 Gbps	TMECS	\$18,000.00	\$15,000.00	\$12,000.00	\$8,500.00	\$7,250.00	N/A
(b) Interoffice Transport Mileage							
(1) Channel Mileage Termination							
- per point of termination, per point of mileage termination							
- Rate 10 Gbps	CM6	1,800.00	1,350.00	900.00	637.50	575.00	N/A
(2) Channel Mileage							
- Per Mile							
- Rate 10 Gbps	1L5XX	425.00	300.00	250.00	125.00	100.00	N/A
(c) Repeater							
- each	VU4	7,200.00	6,000.00	4,800.00	3,400.00	2,900.00	N/A
(d) Diversity Options							
Local Channel Diversity							
- Per Channel Terminating Bit Rate 10 Gbps	CPALX	3,938.00	3,038.00	2,700.00	2,250.00	2,025.00	850.00
Inter Wire Center Diversity							
- Per Channel Terminating Bit Rate 10 Gbps	CPATX	2,625.00	2,025.00	1,800.00	1,500.00	1,350.00	700.00
Alternate Wire Center Diversity							
- Per Channel Terminating Bit Rate 10 Gbps	CPAAX	6,300.00	4,860.00	4,320.00	3,600.00	3,240.00	950.00

/1/ Effective October 29, 2017, DecaMAN Service will no longer be available for new circuits. The Company will no longer accept orders for adds, moves, changes or new term plans for DecaMAN Service, and existing term plans may not be renewed, converted or extended. Following the expiration of a customer's existing DecaMAN term agreement, service will be provided on a month-to-month basis at the applicable monthly extension rates until the service is discontinued.

(N)
|
(N)

ACCESS SERVICE

21. Metropolitan Statistical Area Access Service (Cont'd)

21.5 Rates and Charges (Cont'd)

21.5.2 Special Access Service (Cont'd)

21.5.2.17.1 10 Gigabit Ethernet Metropolitan Area Network (DecaMAN®)^{/2/} (Cont'd)

(C)

(a) Recurring Charges (Cont'd)

(1) LAN-PHY (Cont'd)

	USOC	Monthly Extension	12 Mo.	Term Pricing Plan			NRC
				24 Mo.	36 Mo.	60 Mo.	
(e) Protection – per DecaMAN® service arranged							
- Equipment Only Protection, per terminating end	CPAEX	\$9,000.00	\$8,250.00	\$7,350.00	\$6,300.00	\$5,400.00	\$3,000.00
- Equipment Plus Alternate Wire Center Path Protection, per terminating end	CPAFX	14,760.00	12,300.00	11,040.00	9,600.00	8,400.00	4,500.00
- Equipment Plus Channel Termination (Local Channel) Path Protection, per terminating end	CPAGX	13,140.00	10,950.00	9,900.00	8,550.00	7,350.00	4,200.00
- Inter Wire Center Path Protection, per interoffice segment	CPAHX	1,425.00	1,125.00	600.00	450.00	300.00	625.00
- Power Protection ^{/1/}	VBBGX	700.00	625.00	525.00	480.00	435.00	475.00

(T)

/1/ Power Protection rate elements are applicable, as set forth in Section 26(K) of this tariff.

/2/ Effective October 29, 2017, DecaMAN Service will no longer be available for new circuits. The Company will no longer accept orders for adds, moves, changes or new term plans for DecaMAN Service, and existing term plans may not be renewed, converted or extended. Following the expiration of a customer's existing DecaMAN term agreement, service will be provided on a month-to-month basis at the applicable monthly extension rates until the service is discontinued.

(T)
(N)
|
(N)

ACCESS SERVICE

21. Metropolitan Statistical Area Access Service (Cont'd)

21.5 Rates and Charges (Cont'd)

21.5.2 Special Access Service (Cont'd)

21.5.2.17.1 10 Gigabit Ethernet Metropolitan Area Network (DecaMAN[®])/^{1/} (Cont'd)

(C)

(a) Recurring Charges (Cont'd)

(2) WAN-PHY

	USOC	Monthly Extension	12 Mo.	Term Pricing Plan			NRC
				24 Mo.	36 Mo.	60 Mo.	
(a) Local Distribution Channel							
- Per Point of Termination Terminating Bit Rate 10 Gbps	TMECS	\$19,800.00	\$16,500.00	\$13,200.00	\$9,600.00	\$8,200.00	N/A
(b) Interoffice Transport Mileage							
(1) Channel Mileage Termination							
- per point of termination, per point of mileage termination							
- Rate 10 Gbps	CM6	1,800.00	1,350.00	900.00	637.50	575.00	N/A
(2) Channel Mileage							
- Per Mile							
- Rate 10 Gbps	1L5XX	425.00	300.00	250.00	125.00	100.00	N/A
(c) Repeater							
- each	VU4	7,200.00	6,000.00	4,800.00	3,400.00	2,900.00	N/A
(d) Diversity Options							
Local Channel Diversity							
- Per Channel Terminating Bit Rate 10 Gbps	CPALX	3,938.00	3,038.00	2,700.00	2,250.00	2,025.00	850.00
Inter Wire Center Diversity							
- Per Channel Terminating Bit Rate 10 Gbps	CPATX	2,625.00	2,025.00	1,800.00	1,500.00	1,350.00	700.00
Alternate Wire Center Diversity							
- Per Channel Terminating Bit Rate 10 Gbps	CPAAX	6,300.00	4,860.00	4,320.00	3,600.00	3,240.00	950.00

/1/ Effective October 29, 2017, DecaMAN Service will no longer be available for new circuits. The Company will no longer accept orders for adds, moves, changes or new term plans for DecaMAN Service, and existing term plans may not be renewed, converted or extended. Following the expiration of a customer's existing DecaMAN term agreement, service will be provided on a month-to-month basis at the applicable monthly extension rates until the service is discontinued.

(N)
|
(N)

ACCESS SERVICE

21. Metropolitan Statistical Area Access Service(Cont'd)

21.5 Rates and Charges (Cont'd)

21.5.2 Special Access Service (Cont'd)

21.5.2.17.1 10 Gigabit Ethernet Metropolitan Area Network (DecaMAN[®])^{2/} (Cont'd)

(C)

(a) Recurring Charges (Cont'd)

(2) WAN-PHY (Cont'd)

	USOC	Monthly Extension	12 Mo.	Term Pricing Plan			NRC	
				24 Mo.	36 Mo.	60 Mo.		
(e) Protection – per DecaMAN [®] service arranged								
- Equipment Only Protection, per terminating end	CPAEX	\$9,000.00	\$8,250.00	\$7,350.00	\$6,300.00	\$5,400.00	\$3,000.00	
- Equipment Plus Alternate Wire Center Path Protection, per terminating end	CPAFX	14,760.00	12,300.00	11,040.00	9,600.00	8,400.00	4,500.00	
- Equipment Plus Channel Termination (Local Channel) Path Protection, per terminating end	CPAGX	13,140.00	10,950.00	9,900.00	8,550.00	7,350.00	4,200.00	
- Inter Wire Center Path Protection, per interoffice segment	CPAHX	1,425.00	1,125.00	600.00	450.00	300.00	625.00	
- Power Protection ^{1/}	VBBGX	700.00	625.00	525.00	480.00	435.00	475.00	(T)

/1/ Power Protection rate elements are applicable, as set forth in Section 26(K), of this tariff.

/2/ Effective October 29, 2017, DecaMAN Service will no longer be available for new circuits. The Company will no longer accept orders for adds, moves, changes or new term plans for DecaMAN Service, and existing term plans may not be renewed, converted or extended. Following the expiration of a customer's existing DecaMAN term agreement, service will be provided on a month-to-month basis at the applicable monthly extension rates until the service is discontinued.

(T)
(N)
|
(N)

ACCESS SERVICE

21. Metropolitan Statistical Area Access Service (Cont'd)

21.5 Rates and Charges (Cont'd)

21.5.2 Special Access Service (Cont'd)

21.5.2.17.1 10 Gigabit Ethernet Metropolitan Area Network (DecaMAN®)^{/2/} (Cont'd) (C)

(b) Installation and Rearrangement Charges

(1) LAN-PHY

	USOC	Nonrecurring Charge ^{/1/}	(T)
(a) Administrative Charge per Order	ORCMX	\$ 60.00	
(b) Design Central Office Connection Charge per circuit	NRBCL	600.00	
(c) Customer Connection Charge per Termination	NRBBL	1,400.00	

(2) WAN PHY

	USOC	Nonrecurring Charge ^{/1/}	(T)
(a) Administrative Charge per Order	ORCMX	\$ 60.00	
(b) Design Central Office Connection Charge per circuit	NRBCL	600.00	
(c) Customer Connection Charge per Termination	NRBBL	1,400.00	

/1/ The Installation and Rearrangement nonrecurring charges will be waived for customers purchasing a 36 or 60 month term pricing plan. (T)

/2/ Effective October 29, 2017, DecaMAN Service will no longer be available for new circuits. The Company will no longer accept orders for adds, moves, changes or new term plans for DecaMAN Service, and existing term plans may not be renewed, converted or extended. Following the expiration of a customer's existing DecaMAN term agreement, service will be provided on a month-to-month basis at the applicable monthly extension rates until the service is discontinued. (N)

ACCESS SERVICE

26. 10 Gigabit Ethernet Metropolitan Area Network (DecaMAN®)^{/1/} (C)

(A) Basic Channel Description

DecaMAN® is a fiber based, point-to-point, 10 Gigabit Ethernet service that allows customers to transport data signals between local area networks (LANs). DecaMAN® transports data signals at the rate of 10 Gigabits per second (Gbps). All basic service configurations provide a single direction of transmission.

Rates and charges for DecaMAN® Service are set forth in Section 26(O), following , with the exception of the services provided by the Telephone Company in the Metropolitan Statistical Areas (MSAs) in which the Telephone Company has received Phase II pricing flexibility pursuant to Subpart H of Part 69 of the Commission's Rules. The rates and charges for the DecaMAN® Service in the MSAs that have received Phase II pricing flexibility are set forth in Section 21. (T)

DecaMAN® is available with two different interfaces:

10 Gigabit Ethernet (LAN-PHY) - A version of Ethernet that allows data transmission rates of 10.3125 Gbps with a LAN-PHY only interface.

10 Gigabit Ethernet (WAN-PHY) - A version of Ethernet that allows data transmission rates of 9.953 Gbps with a WAN-PHY only interface.

The following regulations will apply to DecaMAN®:

- (1) The Telephone Company considers a service interrupted when it becomes unusable to the customer because of a failure of a facility component used to furnish service under this tariff when the protective controls applied by the Telephone Company result in the complete loss of service by the customer. An interruption period starts when a customer reports an inoperative service to the Telephone Company and the Telephone Company confirms that continuity has been lost, and ends when the service is operative.

/1/ Effective October 29, 2017, DecaMAN Service will no longer be available for new circuits. The Company will no longer accept orders for adds, moves, changes or new term plans for DecaMAN Service, and existing term plans may not be renewed, converted or extended. Following the expiration of a customer's existing DecaMAN term agreement, service will be provided on a month-to-month basis at the applicable monthly extension rates until the service is discontinued. (N)
|
(N)

ACCESS SERVICE

26. 10 Gigabit Ethernet Metropolitan Area Network (DecaMAN®)^{/1/} (Cont'd)

(C)

(A) Basic Channel Description (Cont'd)

(2) Service Provisioning

- (a) The customer provided equipment (CPE) must deliver the data signals for DecaMAN® transport for the subscribed data service.
- (b) DecaMAN® provides physical layer transport only. The Telephone Company assumes no responsibility for the through transmission of signals generated by the CPE, for the signals by the CPE, or address signaling to the extent the CPE performs addressing. Error detection and correction of data generated by the CPE is the customer's responsibility.
- (c) There are two provisioning options for DecaMAN®:
 - 10 Gigabit Ethernet LAN-PHY, which provides data transmission rates of 10 Gigabits per second with a LAN-PHY interface.
 - 10 Gigabit Ethernet WAN-PHY, which provides data transmission rates of 10 Gigabits per second with a WAN-PHY interface.

(B) Rate Regulations

This section contains the specific regulations governing the rates and charges which may apply to the DecaMAN® Service. The rates and charges in effect at the time the DecaMAN® Service is installed and accepted by the customer are the rates and charges which will be billed to the customer requesting the service. The rates and charges in effect at the time may not be the same as those rates and charges in effect at the time the customer requests the service.

If the Telephone Company initiates rate changes resulting in a decrease of rates for an existing service with a 1, 2, 3, or 5 year term period, those rate changes will be passed along to the customer. Rate changes resulting in an increase of rates for an existing service with a 1, 2, 3, or 5 year term period will not exceed the original rate for that selected term period.

There are 7 basic rate elements, which apply to DecaMAN® service:

(1) Local Distribution Channel (LDC)

Local Distribution Channel (Same as Channel Termination) is the termination of DecaMAN® at a customer designated premise (node), as described in Section 7.2.1(A), consisting of the following two elements:

- (a) the termination for the fiber optic facilities at each node and its serving wire center.
- (b) the fiber optic facility between each node and its serving wire center.

/1/ Effective October 29, 2017, DecaMAN Service will no longer be available for new circuits. See footnote on Page 993.

(N)
(N)

ACCESS SERVICE

26. 10 Gigabit Ethernet Metropolitan Area Network (DecaMAN®)^{/1/} (Cont'd)

(C)

(B) Channel Configuration (Cont'd)

(2) Interoffice Mileage

Interoffice Transport facilities, which provide the transmission path between Serving Wire Centers associated with two customer designated premises, are comprised of Channel Mileage Termination and Channel Mileage rate elements.

(3) Repeater

Repeaters (Circuit Regenerators) provide essential detection and retransmission of DecaMAN® signals. Repeaters are provided as required by the Telephone Company when actual fiber facility loss between customer designated premises and/or central office locations exceed design limits. Repeaters will be located exclusively in Telephone Company central offices and are required for each successive transport segment of approximately 21.4 db.

When protection options are ordered, as set forth in Section 26(K), additional repeaters may be necessary on the protected path as determined by the Telephone Company. The Repeater rate element will be applied to a protected circuit per fiber pair.

(4) Collocation Transport

Collocation Transport provides for the transmission facilities arrangement between a Telephone Company Central Office frame and a collocation frame located in the Telephone Company Central Office.

There are two components of Collocation Transport.

(a) Inter/Intra Office Fixed

The Inter/Intra office fixed rate element provides for the electronic equipment required to terminate a channel between two collocation arrangements located either in the same central office (intra) or in two separate central offices (inter).

(b) Inter Office Per Mile

The per mile charge provides for the electronic equipment and facilities necessary to provide the interoffice transport between collocation arrangements.

The following types of Collocation Transport are:

LAN PHY
WAN PHY

In addition to one Collocation Transport charge, two EISCC charges of the same speed from Section 16.5 will apply, per collocation arrangement.

/1/ Effective October 29, 2017, DecaMAN Service will no longer be available for new circuits. See footnote on Page 993.

(N)
(N)

ACCESS SERVICE

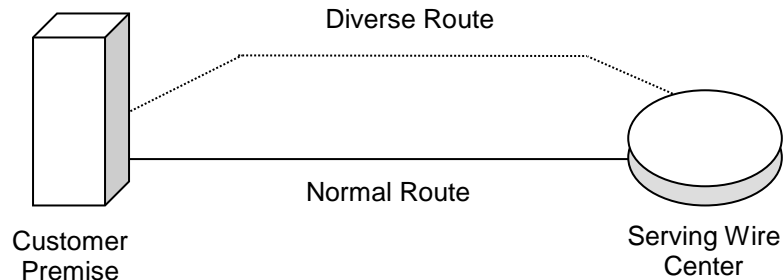
26. 10 Gigabit Ethernet Metropolitan Area Network (DecaMAN®)^{/1/} (Cont'd)

(C)

(B) Rate Regulations (Cont'd)

(5) Local Channel Diversity

Local Channel Diversity provides for a transmission path between a designated customer premises and the standard service wire center (SWC) that is diverse from the normal/standard transmission path. Local Channel Diversity requires two DecaMAN® services purchased by the same customer of record. With this arrangement, one or more local distribution channels will be provisioned over the standard route, and one or more local distribution channels will be provisioned over the diverse route. Local Channel Diversity does not provide for all diversity, it only allows for diversity from the splice point closest to the customer's property line to the SWC. If a customer desires full diversity, arrangements must be made for constructing dual entrance facilities into the customer's premises, at the customer's expense.



(6) Inter-Wire Center (IWC) Diversity

Inter-Wire Center (IWC) Diversity arrangements presume that each end of a DecaMAN® local distribution channel is serviced out of a different serving wire center (SWC). Inter-Wire Center Diversity requires two DecaMAN® services purchased by the same customer of record.

/1/ Effective October 29, 2017, DecaMAN Service will no longer be available for new circuits. See footnote on Page 993.

(N)
(N)

ACCESS SERVICE

26. 10 Gigabit Ethernet Metropolitan Area Network (DecaMAN®)^{1/} (Cont'd)

(C)

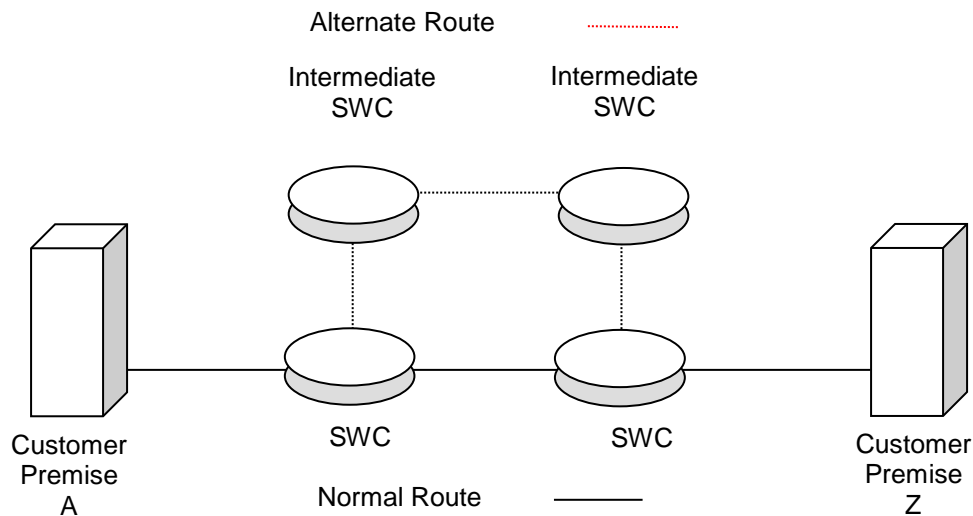
(B) Rate Regulations (Cont'd)

(6) Inter-Wire Center (IWC) Diversity (Cont'd)

This arrangement provides a transmission path for DecaMAN® local distribution channels between the customer's designated SWC and the SWC at the distant end of the circuit over a transmission path that is separate from the standard transmission path between the two wire centers. IWC diversity does not provide for full diversity. It only offers interoffice diversity. If a customer desires full diversity, Alternate Wire Center Diversity must be implemented along with IWC Diversity. Additionally, arrangements must be made for constructing dual entrance facilities at the customer's premises, at the customer's expense.

(a) Inter-Wire Center Diversity (IWC) Mileage Measurement

Mileage measurements for Access Services, provisioned via an Inter-Wire Center Diversity, will be based on the diverse routing; i.e. mileage measurements will be calculated between the Intermediate Serving Wire Centers along the circuit path of the diversely routed DecaMAN® service.



/1/ Effective October 29, 2017, DecaMAN Service will no longer be available for new circuits. See footnote on Page 993.

(N)
(N)

ACCESS SERVICE

26. 10 Gigabit Ethernet Metropolitan Area Network (DecaMAN®)^{/1/} (Cont'd)

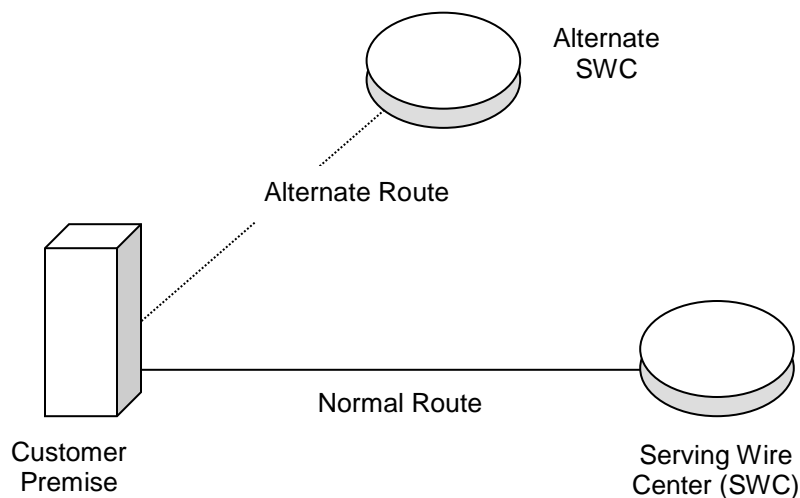
(C)

(B) Rate Regulations (Cont'd)

(7) Alternate Wire Center Diversity

Alternate Wire Center Diversity is for the local loop only. It provides a local channel transmission path for DecaMAN® service between the customer's designated premises and a wire center that is not the normal (or standard) service wire center. The Telephone Company will choose the alternate wire center closest to the customer's designated premises that is capable of providing DecaMAN® service over the alternate route. If a customer desires full diversity, arrangements must be made for constructing dual entrance facilities into the customer's premises, at the customer's expense.

If the circuit routed to the alternative wire center has Interoffice Mileage, measurements will be based on the alternate routing; i.e. mileage measurements will be made to the alternate wire center rather than the serving wire center from which the customer designed premises would normally obtain dial tone.



/1/ Effective October 29, 2017, DecaMAN Service will no longer be available for new circuits. See footnote on Page 993.

(N)
(N)

ACCESS SERVICE

26. 10 Gigabit Ethernet Metropolitan Area Network (DecaMAN®)^{/1/} (Cont'd)

(C)

(C) Nonrecurring Charges

Nonrecurring charges are one-time charges that apply for specific work activity related to the provisioning of DecaMAN® Service, as described in Section 7.4.2.

(D) Recurring Charges

Recurring Charges are rates that apply each month or fraction thereof that the service is provided. Recurring rates apply to 12-, 24-, 36-, or 60-month term periods under the terms and conditions of a Term Pricing Plan (TPP), discussed in Section 26 (F).

(E) Monthly Extension Rates

Upon completion of a TPP, customer's service will automatically convert to the Monthly Extension Rates unless the customer requests a new TPP.

(F) Term Pricing Plan (TPP)

DecaMAN® is available for 12-, 24-, 36-, or 60-month term periods. If the Telephone Company initiates rate changes resulting in a decrease of rates for an existing service with a TPP, those rate changes will be passed along to the customer. Rate changes resulting in an increase of rates for an existing service with a TPP will not exceed the original rate for that selected TPP.

(1) Renewals

At the end of a TPP period, the customer must select one of the following options within one month prior to the expiration date:

- (a) Renew the service for a one, two, three, or five year TPP as provided in this tariff;
- (b) Elect to disconnect the service upon expiration of the billing period; or
- (c) Continue the service on a monthly basis at the current Monthly Extension Rates.

All services under an existing TPP that are not renewed within the period stated above will revert to Option (1)(c) above and will be billed at the current Monthly Extension Rates.

/1/ Effective October 29, 2017, DecaMAN Service will no longer be available for new circuits. See footnote on Page 993.

(N)
(N)

ACCESS SERVICE

26. 10 Gigabit Ethernet Metropolitan Area Network (DecaMAN®)^{/1/} (Cont'd)

(C)

(F) Term Pricing Plan (TPP) (cont'd)

(2) Conversions

During the customer's TPP, term conversions may be made to a new TPP term of the same or greater length. The expiration date of the new service must be beyond the expiration date of the original TPP term. With the new TPP, the customer incurs no termination liability for the remaining months on the original TPP.

An Administrative Charge is applicable when customers renew or change the length of the TPP term.

(3) Termination Liability

Customers requesting termination of service prior to the expiration date of the TPP term will be liable for a termination charge equal to fifty percent (50%) of the Monthly Recurring Rate for the number of months remaining in the applicable TPP term, which is calculated as follows:

(Monthly Recurring Rate) X (Months Remaining in TPP term) X (50%) = Termination Liability Charge

Example: A DecaMAN® customer with a \$18,000.00 monthly rate terminates service after 2 years with 1 year (12 months) remaining in a 3 year TPP. The termination liability charge would be calculated as follows:

\$18,000 X 12 X .50 = \$108,000.00 Termination Liability Charge

/1/ Effective October 29, 2017, DecaMAN Service will no longer be available for new circuits. See footnote on Page 993.

(N)
(N)

ACCESS SERVICE

26. 10 Gigabit Ethernet Metropolitan Area Network (DecaMAN[®])^{/1/} (Cont'd)

(C)

(G) Moves

Moves involve a change in the physical location of one of the following:

- (1) Service rearrangement;
- (2) Point of Termination at the customer's premises; or
- (3) Customer's premises.

Move charges are dependent upon the type of move requested by the customer.

(1) Service Rearrangement

Service rearrangements are changes to existing (installed) services, which do not result in a change in the minimum period requirements, as set forth in Section 7.4.2(C)(6).

(2) Moves Within the Same Building

When the move is to a new location within the same building, the Administration charge and Customer Connection charge for the service termination affected will apply. There will be no change in the minimum period requirements, as described in Section 7.4.6(A).

(3) Moves to a Different Building

Moves to a different building will be treated as a discontinuance of service; therefore, all nonrecurring charges associated with new service, and new minimum period requirements, as described in Section 7.4.6(B), will apply.

/1/ Effective October 29, 2017, DecaMAN Service will no longer be available for new circuits. See footnote on Page 993.

(N)
(N)

ACCESS SERVICE

26. 10 Gigabit Ethernet Metropolitan Area Network (DecaMAN®)^{/1/} (Cont'd)

(C)

(G) Moves (Cont'd)

(4) DecaMAN® customers subscribing to three (3) and five (5) year Term Pricing Plans may move one end of the DecaMAN® service per the following regulations:

(a) A customer may move one end of the DecaMAN® service to a different premises in the same LATA, without incurring early termination liability charges for their existing DecaMAN® service, providing the following criteria are met, and are contingent upon the availability of fiber from premises to premises.

- (1) Customers must have completed at least 15 months (for 3 year TPP), and 18 months (for 5 year TPP) of their existing DecaMAN® TPP,
- (2) The customer subscribes to a new Term Pricing Plan period that is greater than the remaining months in the existing Term Pricing Plan,
- (3) The billing period revenue for the new service is equal to or greater than the billing period revenue remaining in the service being converted.
- (4) Spare facilities and equipment must be available or special construction charges, as set forth in Ameritech Tariff F.C.C. No. 3, shall apply.

The moved service will require a disconnect of the existing DecaMAN® service and placement of an order for the new DecaMAN® service for same customer of record as disconnected service.

The monthly rates for the new service shall be those rates in effect at the time the new service is installed and requires a disconnect of the existing DecaMAN® service and placement of an order for new DecaMAN® service.

Nonrecurring charges will apply where applicable.

/1/ Effective October 29, 2017, DecaMAN Service will no longer be available for new circuits. See footnote on Page 993.

(N)
(N)

ACCESS SERVICE

26. 10 Gigabit Ethernet Metropolitan Area Network (DecaMAN®)^{/1/} (Cont'd)

(C)

(G) Moves (Cont'd)

(4) (Cont'd)

- (b) If the DecaMAN® service was installed with protection options and the customer subsequently requests a move of the channel termination within the same building after installation, a change may be required to the customer premises based Telephone Company equipment, which will be determined by the Telephone Company. Nonrecurring charges as set forth in Section 26 (C) are applicable (one-half the nonrecurring charge per channel termination). With this upgrade the customer will experience an out of service condition.

(H) Mileage Measurement

(1) Standard Two-Fiber Circuit

The mileage is calculated on the airline distance between the locations involved, i.e. the serving wire centers associated with two customer designated premises and an international boundary point, a serving wire center associated with a customer designated premise and a Telephone Company Hub, a serving wire center associated with a customer designated premise and a WATS Serving Office as described in Section 7.4.7.

(2) Diversely Routed Circuit

Described in Section 26(B)(6)(a).

/1/ Effective October 29, 2017, DecaMAN Service will no longer be available for new circuits. See footnote on Page 993.

(N)
(N)

ACCESS SERVICE

26. 10 Gigabit Ethernet Metropolitan Area Network (DecaMAN®)^{/1/} (Cont'd)

(C)

(H) Mileage Measurement (Cont'd)

(3) Protected Four-Fiber Circuit

For protected DecaMAN® service, mileage charges are applicable on both paths of the protected service. Both Fixed Mileage and Variable Mileage rates will be applied to each fiber path. Mileage measurements for the primary path will be calculated similar to a standard circuit (described in Section 26 (H) (1)). Mileage measurements for the secondary path will be based on the additional routing (i.e., mileage measurements will be calculated between the intermediate Wire Centers along the circuit path of the diversity routed DecaMAN® service) .

(I) Modification of Access Service

The customer may request a modification of its Access Order at anytime prior to notification by the Telephone Company that service is available for the customer's use. The Telephone Company will make every effort to accommodate a requested modification when it is able to do so with the normal work force assigned to complete such an order within normal business hours.

If the modification cannot be made with the work force during normal business hours, the Telephone Company will notify the customer. If the customer still desires the Access Order Modification, the Telephone Company will schedule a new service date. All charges for Access Order modifications will apply on a per occurrence basis as described in Section 5.2.2.

/1/ Effective October 29, 2017, DecaMAN Service will no longer be available for new circuits. See footnote on Page 993.

(N)
(N)

ACCESS SERVICE

26. 10 Gigabit Ethernet Metropolitan Area Network (DecaMAN®)^{/1/} (Cont'd)

(C)

(J) Optional Features

(1) Protection Options

Protection options are provisioned on the customer's DecaMAN® service, and the customer is not required to purchase a second DecaMAN® circuit for protection options. Protection options are applied on a per DecaMAN® circuit basis only.

Protection options are available where facilities and/or operating conditions permit. Where facilities and/or operating conditions do not permit, Special Construction charges, as set forth in Ameritech Tariff F.C.C. No. 3 may apply. Protection options provide additional levels of reliability to DecaMAN® service. There are multiple protection options offered. The options do not need to be the same, but both Channel Terminations of the DecaMAN® service must include some form of protection for the service to be considered protected.

The Telephone Company will design the protection option based upon the configuration of the customer's DecaMAN® service.

Additional repeaters may be necessary on the protected path as determined by the Telephone Company and set forth in Section 26 (B) (3).

If the DecaMAN® service was installed without protection and the customer subsequently requests protection options after the DecaMAN® order has been completed, and customer premises locations remain the same, a change to the customer premises based Telephone Company equipment is required. This change will be treated as an upgrade to the DecaMAN® service, and Installation, Rearrangement and Protection nonrecurring charges are applicable. This change will require a disconnect of the existing DecaMAN® service and placement of an order for the new DecaMAN® service for the same customer of record. With this upgrade the customer will experience a temporary out of service condition.

Protection switching in less than 50 milliseconds will occur on DecaMAN® services with protection options, with the exception of Power Protection, which is not Switch protected. Protection options are offered with a Service Level Agreement (SLA) that targets a service availability of 99.99%. SLA are not applicable in the event of a cable cut in any unprotected portion of the DecaMAN® service fiber path or when customer requested modifications to the service require down time.

/1/ Effective October 29, 2017, DecaMAN Service will no longer be available for new circuits. See footnote on Page 993.

(N)
(N)

ACCESS SERVICE

26. 10 Gigabit Ethernet Metropolitan Area Network (DecaMAN®)^{/1/} (Cont'd)

(C)

(J) Optional Features (Cont'd)

(1) Protection Options (Cont'd)

DecaMAN® Protection Options are offered as follows:

- (a) Equipment Only Protection – per Termination Point
- (b) Equipment Plus Fiber Path Protection
 - (1) Equipment Plus Alternate Wire Center Path Protection – per Terminating Point
 - (2) Equipment Plus Channel Termination Path Protection – per Terminating Point
 - (3) Inter Wire Center Path Protection – per Interoffice Segment

(c) Power Protection

(2) Equipment Only Protection

Equipment Only Protection offers one DecaMAN® signal routed on two different fiber pairs that co-exist in the same cable and conduit structure that terminate into two distinct and separate network terminating equipment devices at the customer's premises.

(T)

All protected configurations have one working and one standby path. In the event of a failure of the customer's transmission path, the DecaMAN® equipment will switch the customer's transmission to a dedicated standby path within 50 milliseconds of detection. In the event of a failure to both fiber transmission paths, an out of service condition will result. This form of protection can only be ordered per channel termination for each protected DecaMAN® service, and may also apply to the Inter-Wire center segment if the DecaMAN® service is served by more than one serving wire center.

/1/ Effective October 29, 2017, DecaMAN Service will no longer be available for new circuits. See footnote on Page 993.

(N)
(N)

ACCESS SERVICE

26. 10 Gigabit Ethernet Metropolitan Area Network (DecaMAN®)^{/1/} (Cont'd)

(C)

(J) Optional Features (Cont'd)

(2) Equipment Only Protection (Cont'd)

If a customer requests complete protection extending to the Telephone Company serving wire center from their premises location when utilizing Equipment Protection, they must request diverse entrance facilities into their premises at each end from the nearest Telephone Company splice point closest to the customer premises location. This work is subject to special construction charges as set forth in Ameritech Tariff F.C.C. No. 3.

(3) Equipment Plus Fiber Path Protection

Equipment Plus Fiber Path Protection offers varying degrees of path protection for each channel termination of the DecaMAN® service, plus the inter-wire segment if the service is served by more than one serving wire center, and is offered as follows:

(a) Equipment Plus Alternate Wire Center Path Protection

Equipment Plus Alternate Wire Center Path Protection offers one DecaMAN® signal routed over one fiber pair of the protected DecaMAN® service from the customer's premises to the customer's normal serving wire center, and a duplicate DecaMAN® signal routed over a diversely routed fiber pair to the Alternate Wire center selected by the Telephone Company.

If any location between the two fiber paths is closer than ten feet, the location will be disclosed to the customer. The customer will determine whether to accept the engineered path or agree to pay special construction charges, as set forth in Ameritech Tariff F.C.C. No. 3, to provide a completely diverse route.

/1/ Effective October 29, 2017, DecaMAN Service will no longer be available for new circuits. See footnote on Page 993.

(N)
(N)

ACCESS SERVICE

26. 10 Gigabit Ethernet Metropolitan Area Network (DecaMAN®)^{/1/} (Cont'd)

(C)

(J) Optional Features (Cont'd)

(3) Equipment Plus Fiber Path Protection (Cont'd)

(a) Equipment Plus Alternate Wire Center Path Protection (Cont'd)

Where facilities are not available, the customer may select Equipment Only Protection for an inter-office segment. This option can be selected for one or both channel terminations of the DecaMAN® service.

All protected configurations have one working and one standby path. In the event of a failure of the customer's transmission path, the DecaMAN® service will switch to a dedicated standby path within 50 milliseconds of detection. In the event of failure to both fiber transmission paths, an out of service condition will result. This form of protection can only be ordered per channel termination for each protected DecaMAN® service.

If a customer requests complete protection extending to the Telephone Company serving wire center from their premises location when utilizing Equipment Protection Plus Alternate Wire Center Path Protection, they must request diverse entrance facilities into their premises at each end, from the nearest Telephone Company splice point closest to the customer premise location. This work is subject to special construction charges as set forth in Ameritech Tariff F.C.C. No. 3.

/1/ Effective October 29, 2017, DecaMAN Service will no longer be available for new circuits. See footnote on Page 993.

(N)
(N)

ACCESS SERVICE

26. 10 Gigabit Ethernet Metropolitan Area Network (DecaMAN®)^{/1/} (Cont'd)

(C)

(J) Optional Features (Cont'd)

(3) Equipment Plus Fiber Path Protection (Cont'd)

(b) Equipment Plus Channel Termination Path Protection

Equipment Plus Channel Termination Path Protection offers a duplicate DecaMAN® signal routed over two diversely routed fiber paths to the customer's normal serving wire center.

If any location(s) between two fiber paths is closer than ten feet, the location(s) will be disclosed to the customer. The customer will determine whether to accept the engineered path or agree to pay special construction charges as set forth in Ameritech Tariff F.C.C. No. 3, to provide a completely diverse route.

All protected configurations have one working and one standby path. In the event of a failure of the customer's transmission path, DecaMAN® technology will switch the customer's transmission to a dedicated standby path within 50 milliseconds of detection. In the event of failure to both fiber transmission to a dedicated standby path and/or failure to both fiber transmission paths, an out of service condition will result.

This form of protection can only be ordered per Channel Termination for each protected DecaMAN® service, from the customer's premises location, or from the manhole/splice point nearest the customer premises, to the Telephone Company serving wire center.

/1/ Effective October 29, 2017, DecaMAN Service will no longer be available for new circuits. See footnote on Page 993.

(N)
(N)

ACCESS SERVICE

26. 10 Gigabit Ethernet Metropolitan Area Network (DecaMAN®)^{/1/} (Cont'd)

(C)

(J) Optional Features (Cont'd)

(3) Equipment Plus Fiber Path Protection (Cont'd)

(b) Equipment Plus Channel Termination Path Protection (Cont'd)

If a customer requests complete protection extending to the Telephone Company serving wire center from their premises location when utilizing Equipment Protection Plus Channel Termination Path Protection, they must request diverse entrance facilities into their premises at each end from the nearest Telephone Company splice point closest to the customer premises location. This work is subject to Special Construction charges as set forth in Ameritech Tariff F.C.C. No. 3.

(c) Inter-Wire Center Path Protection

Inter-Wire Center Path Protection offers a duplicate DecaMAN® signal routed over two diversely routed fiber paths between the two serving wire centers or alternate wire centers. Path protection starts at the nearest manhole outside the Telephone Company serving wire center. Inter Wire Center Path Protection must be ordered with either Equipment Only, Channel Termination Path Protection or Alternate Wire Center Path Protection.

If any location(s) between the two fiber paths is closer than ten feet, the location(s) will be disclosed to the customer. The customer will determine whether to accept the engineered path or agree to pay special construction charges, as set forth in Ameritech Tariff F.C.C. No. 3, to provide a completely diverse route.

/1/ Effective October 29, 2017, DecaMAN Service will no longer be available for new circuits. See footnote on Page 993.

(N)
(N)

ACCESS SERVICE

26. 10 Gigabit Ethernet Metropolitan Area Network (DecaMAN®)^{1/} (Cont'd)

(C)

(J) Optional Features (Cont'd)

(3) Equipment Plus Fiber Path Protection (Cont'd)

(c) Inter-Wire Center Path Protection (Cont'd)

All protected configurations have one working and one standby path. In the event of a failure of the customer's transmission path, DecaMAN® technology will switch the customer's transmission to a dedicated standby path within 50 milliseconds of detection. In the event of failure to both fiber transmission paths, an out of service condition will result.

(d) Power Protection

Power Protection provides DecaMAN® customers with battery backup for up to eight (8) hours to maintain DecaMAN® equipment in the event of a commercial AC power failure.

Power Protection is offered on a per equipment bay capacity basis, per customer premises, and is dependent upon the number of DecaMAN® services for the DecaMAN® customer of record. The Telephone Company will apply the power protection rate elements based upon the circuit capacity. More than one rate element may be applicable. The Telephone Company will determine the design and engineering requirements for Power Protection for DecaMAN® customers.

/1/ Effective October 29, 2017, DecaMAN Service will no longer be available for new circuits. See footnote on Page 993.

(N)
(N)

ACCESS SERVICE

26. 10 Gigabit Ethernet Metropolitan Area Network (DecaMAN®)^{/1/} (Cont'd)

(C)

J) Optional Features (Cont'd)

(3) Equipment Plus Fiber Path Protection (Cont'd)

(d) Power Protection (Cont'd)

Customers in multi-tenant buildings will require separate equipment and bays dedicated to each customer.

The addition of Power Protection to existing DecaMAN® service may result in temporary service interruption.

Power Protection is not available for installations using a wall mounted cabinet.

Customers are responsible for providing floor space for power equipment as set forth in Section 2.3.3 preceding.

(K) Allowance for Service Interruptions

DecaMAN® (Not Fully Protected)

The DecaMAN® outage credits listed below are in lieu of, and not in addition to, the outage credit allowances provided for in the General Conditions Section of this Guidebook.

A service is interrupted when it becomes unusable to the customer because of a failure of a facility component used to furnish service under this Guidebook, or in the event that the protective controls applied by the Company result in the complete loss of service by the customer. An interruption period starts when an inoperative service is reported to the Company and the Company confirms that continuity has been lost, and ends when the service is operative.

In case of an interruption to DecaMAN® service, allowance for the period of interruption, if not due to the negligence of the customer or the customer's end user, shall be as follows:

- 0 to 10 seconds No credit shall be allowed
- 10 seconds to 4 hours 10% credit of monthly recurring charges
- 4 hours to 12 hours 25% credit of monthly recurring charges
- 12 hours to 24 hours 50% credit of monthly recurring charges
- 24 hours or greater 100% credit of monthly recurring charges

The credit allowance for service interruptions shall not exceed 100 percent of the applicable monthly rate during any billing period.

The Company's failure to provide or maintain services under this Guidebook shall be excused by force majeure events such as, but not limited to, an earthquake, hurricane, flood, fire, storms, tornadoes, explosion, lightning, power surges or failure, fiber cuts, strikes or labor disputes, acts of war, civil disturbances, acts of civil or military authorities or public enemy, governmental orders, civil commotion, criminal actions taken against the Company, acts of God and other circumstances beyond the Company's reasonable control.

/1/ Effective October 29, 2017, DecaMAN Service will no longer be available for new circuits. See footnote on Page 993.

(N)
(N)

ACCESS SERVICE

26. 10 Gigabit Ethernet Metropolitan Area Network (DecaMAN®)^{/1/} (Cont'd)

(C)

(K) Allowance for Service Interruptions (Cont'd)

DecaMAN® (Fully Protected)

A Service Level Agreement (SLA) is offered with fully-protected DecaMAN® service, which provides the customer with a performance commitment that includes financial compensation if the service does not perform as described.

Service availability performance 99.999% is offered on a DecaMAN® service with protection (defined as Equipment Plus Path Protection) for every segment of the service.

If this SLA is not met, the customer will be entitled to a credit equal to 100% of the monthly rate for the period of the interruption of service affecting that rate element(s), not to exceed the total monthly charges for the service. Only one credit in a billing period, will apply.

The service is considered interrupted when the customer reports a service disruption of greater than ten (10) consecutive seconds to the Telephone Company, and the Telephone Company confirms that continuity of its service has been lost.

In order to qualify for this credit, the outage must be determined by the Telephone Company to be in its network, and the failure occurred in that part of the service with the protection. SLA adjustments are not available in the event of a cable cut in any unprotected portion of the DecaMAN® service fiber path, or due to customer requested modifications to the service that may require down time.

SLAs are applicable to customers who purchase Equipment Plus Alternate Wire Center Path Protection or Equipment Plus Channel Termination Path Protection on both ends of a DecaMAN® service (both channel terminations) as well as Inter-Wire Center Path Protection when applicable. The customer is responsible for notifying the Telephone Company when the service parameter within the calendar month falls below the committed level. The customer must request a service credit adjustment within 25 days after the end of the month when the failure occurred.

(L) Upgrade to DecaMAN® from Lower Speeds

Customers with one, two, three, or five year GigaMAN® TPPs may at any time, upgrade to DecaMAN® service without incurring the Termination Liability charge, providing the following criteria are met:

- (1) The customer subscribes to a Term Pricing Plan period that is equal to, or greater than, 12 months;
- (2) The expiration date for the new Term Pricing Plan period is beyond the end of the original Term Pricing Plan period;
- (3) No lapse in service occurs;
- (4) 100% of any waived or unamortized nonrecurring charges will apply;
- (5) The monthly rates for the new service will be those rates in effect at the time the new service is installed;
- (6) The new service is provided between the same customer locations and with the same customer of record as the disconnected service; and
- (7) The billed monthly recurring revenue for the new service is equal to or greater than the billed monthly recurring revenue remaining in the service being converted.

/1/ Effective October 29, 2017, DecaMAN Service will no longer be available for new circuits. See footnote on Page 993.

(N)
(N)

ACCESS SERVICE

26. 10 Gigabit Ethernet Metropolitan Area Network (DecaMAN[®])^{1/} (Cont'd)

(C)

(M) LAN-PHY to WAN-PHY and WAN-PHY to LAN-PHY conversions

LAN-PHY to WAN-PHY and WAN-PHY to LAN-PHY conversions will be treated as a complete disconnect and new connect of the DecaMAN[®] service, requiring placement of an order for the new service. No Termination Liability charges will apply, providing the following criteria are met:

- (1) The customer subscribes to a Term Pricing Plan period that is equal to, or greater than, 12 months;
- (2) The expiration date for the new Term Pricing Plan period is beyond the end of the original Term Pricing Plan period;
- (3) No lapse in service occurs;
- (4) 100% of any waived or unamortized nonrecurring charges will apply;
- (5) The monthly rates for the new service will be those rates in effect at the time the new service is installed;
- (6) The new service is provided between the same customer locations and with the same customer of record as the disconnected service; and
- (7) The billing period revenue for the new service is equal to or greater than the billing period revenue remaining in the service being converted.

(N) Migration to AT&T Dedicated Ethernet

(N)

Customers subscribing to DecaMAN[®] Service may migrate to AT&T Dedicated Ethernet provided by the Company without incurring Termination Charges, subject to the following conditions:

- (1) The new AT&T Dedicated Ethernet and the existing DecaMAN[®] Service must be billed to the same customer of record at the same customer locations.
- (2) The customer's existing service must have been in place for at least 12 months.
- (3) The minimum term for the new service must be at least 12 months and must be equal to or greater than the number of months remaining in the customer's existing Term Payment Plan (TPP) term.
- (4) The speed (capacity/bandwidth) of the new service must be equal to or greater than that of the existing service.
- (5) The customer must issue a disconnect order for the replaced DecaMAN[®] Service to be effective within 90 days after the AT&T Dedicated Ethernet installation date. The disconnect and new orders must be coordinated through the Company.
- (6) If overlapping service is required, the period will be limited to not more than 90 days and billing will apply to both services during the time both services are available.

(N)

^{1/} Effective October 29, 2017, DecaMAN Service will no longer be available for new circuits. See footnote on Page 993.

(N)

(N)

ACCESS SERVICE

26. 10 Gigabit Ethernet Metropolitan Area Network (DecaMAN®)^{/1/} (Cont'd)

(C)

(O) Rates and Charges

(T)

(1) Recurring Charges

(a) LAN-PHY

	USOC	Monthly Extension	Term Pricing Plan				NRC
			12 Mo.	24 Mo.	36 Mo.	60 Mo.	
(1) Local Distribution Channel							
- Per Point of Termination Terminating Bit Rate 10 Gbps	TMECS	\$18,000.00	\$15,000.00	\$12,000.00	\$8,500.00	\$7,250.00	N/A
(2) Interoffice Transport Mileage							
(a) Channel Mileage Termination per point of termination per point of mileage termination Rate 10 Gbps	CM6	1,800.00	1,350.00	900.00	637.50	575.00	N/A
(b) Channel Mileage - Per Mile - Rate 10 Gbps	1L5XX	425.00	300.00	250.00	125.00	100.00	N/A
(3) Repeater - each	VU4	7,200.00	6,000.00	4,800.00	3,400.00	2,900.00	N/A
(4) Diversity Options							
Local Channel Diversity - Per Circuit Terminating Bit Rate 10 Gbps	CPALX	3,938.00	3,038.00	2,700.00	2,250.00	2,025.00	850.00
Inter Wire Center Diversity - Per Channel Terminating Bit Rate 10 Gbps	CPATX	2,625.00	2,025.00	1,800.00	1,500.00	1,350.00	700.00

(T)

/1/ Effective October 29, 2017, DecaMAN Service will no longer be available for new circuits. See footnote on Page 993.

(N)

(N)

ACCESS SERVICE

26. 10 Gigabit Ethernet Metropolitan Area Network (DecaMAN®)^{/2/} (Cont'd) (C)

(O) Rates and Charges (Cont'd) (T)

(1) Recurring Charges (Cont'd)

(a) LAN-PHY (Cont'd)

				Term Pricing Plan				
		USOC	Monthly Extension	12 Mo.	24 Mo.	36 Mo.	60 Mo.	NRC
(4)	Diversity Options (Cont'd)							
	Alternate Wire Center Diversity							
	- Per Channel Terminating Bit Rate 10 Gbps	CPAAX	\$ 6,300.00	\$ 4,860.00	\$ 4,320.00	\$ 3,600.00	\$ 3,240.00	\$ 950.00
(5)	Collocation Transport facilities between Collocation Arrangements							
	- Fixed	1H48S	9,600.00	6,700.00	4,800.00	4,200.00	3,800.00	-
	- Per Mile	1H48S	425.00	300.00	250.00	125.00	100.00	-
(6)	Protection – per DecaMAN® service arranged							
	- Equipment Only Protection, per terminating end	CPAEX	9,000.00	8,250.00	7,350.00	6,300.00	5,400.00	3,000.00
	- Equipment Plus Alternate Wire Center Path Protection, per terminating end ^{/1/}	CPAFX	14,760.00	12,300.00	11,040.00	9,600.00	8,400.00	4,500.00
	- Equipment Plus Channel Termination (Local Channel) Path Protection, per terminating end	CPAGX	13,140.00	10,950.00	9,900.00	8,550.00	7,350.00	4,200.00

/1/ Power Protection rate elements are applicable, as set forth in Section 26 (K). (T)

/2/ Effective October 29, 2017, DecaMAN Service will no longer be available for new circuits. See footnote on Page 993. (N)

ACCESS SERVICE

26. 10 Gigabit Ethernet Metropolitan Area Network (DecaMAN®)^{/2/} (Cont'd) (C)

(O) Rates and Charges (Cont'd) (T)

(1) Recurring Charges (Cont'd)

(a) LAN-PHY (Cont'd)

	USOC	Monthly Extension	Term Pricing Plan				NRC	
			12 Mo.	24 Mo.	36 Mo.	60 Mo.		
(6) Protection – per DecaMAN® service arranged (Cont'd)								
- Inter Wire Center Path Protection, per Circuit	CPAHX	\$1,425.00	\$1,125.00	\$600.00	\$450.00	\$300.00	\$625.00	
- Power Protection ^{/1/}	VBBGX	700.00	625.00	525.00	480.00	435.00	475.00	(T)

(b) WAN-PHY

(1) Local Distribution Channel								
- Per Point of Termination Terminating Bit Rate 10 Gbps	TMECS	19,800.00	16,500.00	13,200.00	9,600.00	8,200.00	N/A	
(2) Interoffice Transport Mileage								
(a) Channel Mileage Termination								
- per point of termination, per point of mileage termination								
- Rate 10 Gbps	CM6	1,800.00	1,350.00	900.00	637.50	575.00	N/A	
(b) Channel Mileage								
- Per Mile								
- Rate 10 Gbps	1L5XX	425.00	300.00	250.00	125.00	100.00	N/A	(T)
(3) Repeater								
- each	VU4	7,200.00	6,000.00	4,800.00	3,400.00	2,900.00	N/A	

/1/ Power Protection rate elements are applicable, as set forth in Section 26 (K). (T)

/2/ Effective October 29, 2017, DecaMAN Service will no longer be available for new circuits. See footnote on Page 993. (N)

ACCESS SERVICE

26. 10 Gigabit Ethernet Metropolitan Area Network (DecaMAN®)^{/1/} (Cont'd)

(C)

(O) Rates and Charges (Cont'd)

(T)

(1) Recurring Charges (Cont'd)

(b) WAN-PHY (Cont'd)

		Monthly	Term Pricing Plan				
	USOC	Extension	12 Mo.	24 Mo.	36 Mo.	60 Mo.	NRC
(4) Diversity Options							
Local Channel Diversity							
- Per Channel Terminating Bit Rate 10 Gbps	CPALX	\$3,938.00	\$3,038.00	\$2,700.00	\$2,250.00	\$2,025.00	\$850.00
Inter Wire Center Diversity							
- Per Circuit Terminating Bit Rate 10 Gbps	CPATX	2,625.00	2,025.00	1,800.00	1,500.00	1,350.00	700.00
Alternate Wire Center Diversity							
- Per Channel Terminating Bit Rate 10 Gbps	CPAAX	6,300.00	4,860.00	4,320.00	3,600.00	3,240.00	950.00
(5) Collocation Transport facilities between Collocation Arrangements							
- Fixed	1H48S	9,600.00	6,700.00	4,800.00	4,200.00	3,800.00	-
- Per Mile	1H48S	425.00	300.00	250.00	125.00	100.00	-
(6) Protection – per DecaMAN® service arranged							
- Equipment Only Protection, per terminating end	CPAEX	9,000.00	8,250.00	7,350.00	6,300.00	5,400.00	3,000.00

/1/ Effective October 29, 2017, DecaMAN Service will no longer be available for new circuits. See footnote on Page 993.

(N)

(N)

Issued: September 14, 2017

Effective: October 29, 2017

By W. Karl Wardin, Regional Vice President - Regulatory
225 West Randolph Street, Chicago, Illinois 60606

ACCESS SERVICE

26. 10 Gigabit Ethernet Metropolitan Area Network (DecaMAN®)^{/3/} (Cont'd) (C)

(O) Rates and Charges (Cont'd) (T)

(1) Recurring Charges (Cont'd)

(b) WAN-PHY (Cont'd)

	USOC	Monthly Extension	Term Pricing Plan				NRC	
			12 Mo.	24 Mo.	36 Mo.	60 Mo.		
(6) Protection - per DecaMAN® service arranged (Cont'd)								
- Equipment Plus Alternate Wire Center Path Protection, per terminating end	CPAFX	\$14,760.00	\$12,300.00	\$11,040.00	\$9,600.00	\$8,400.00	\$4,500.00	
- Equipment Plus Channel Termination (Local Channel) Path Protection, per terminating end	CPAGX	13,140.00	10,950.00	9,900.00	8,550.00	7,350.00	4,200.00	
- Inter Wire Center Path Protection, pre Circuit	CPAHX	1,425.00	1,125.00	600.00	450.00	300.00	625.00	
- Power Protection ^{/1/}	VBBGX	700.00	625.00	525.00	480.00	435.00	475.00	(T)

(2) Installation and Rearrangement Charges

(a) LAN-PHY

	USOC	Nonrecurring Charge ^{/2/}	
(1) Administrative Charge per Order	ORCMX	\$60.00	
(2) Design Central Office Connection Charge per circuit	NRBCL	600.00	
(3) Customer Connection Charge per Termination	NRBBL	1,400.00	

/1/ Power Protection rate elements are applicable, as set forth in Section 26 (K). (T)

/2/ The Installation and Rearrangement nonrecurring charges will be waived for customers purchasing a 36 or 60 month term pricing plan. (T)

/3/ Effective October 29, 2017, DecaMAN Service will no longer be available for new circuits. See footnote on Page 993. (N)

CCESS SERVICE

26. 10 Gigabit Ethernet Metropolitan Area Network (DecaMAN®)^{/1/} (Cont'd) (C)

(O) Rates and Charges (T)

(2) Installation and Rearrangement Charges

(b) WAN-PHY (Cont'd)

	<u>USOC</u>	<u>Nonrecurring Charge^{/1/}</u>	(T)
(1) Administrative Charge per Order	ORCMX	\$60.00	
(2) Design Central Office Connection Charge per circuit	NRBCL	600.00	
(3) Customer Connection Charge per Termination	NRBBL	1,400.00	

/1/ The Installation and Rearrangement nonrecurring charges will be waived for customers purchasing a 36 or 60 month term pricing plan. (T)

/2/ Effective October 29, 2017, DecaMAN Service will no longer be available for new circuits. See footnote on Page 993. (N)
(N)